



ArmaKontrol
Group Company
— 2006 —

| G | o | b | a | l |
Barrier Brand |





ArmaKontrol

3

AWARDS!



**BARRIER AND SECURITY
SYSTEMS BRAND OF THE YEAR**

Index

About Us

Exhibitions we Participated

Crash Test Certified Products

What is PAS68? / What is IWA14-1?

Standards

ATRB-3110 PAS68 Road Blocker – 1100 mm H

ATT-RB-105 PAS68 Telescopic Road Blocker – 1050 mm H

ATB-7110 PAS68 Hydraulic Bollard 1100 mm H

ATB-90 PAS68 Hydraulic Bollard 900 mm H

Road Blocker Systems

Standard Road Blocker

Telescopic Road Blocker

Mini Road Blocker

Giant Road Blocker - 1500mm

360° Experience 

Bollard Systems

Million Series 

Arma-A Type Hydraulic Bollard

Arma-C Type Hydraulic Bollard

Telescopic Hydraulic Bollard

Pneumatic Hydraulic Bollard

New

Built In Hydraulic Bollard

Semi-Automatic Manual Bollard

Manual Bollard

Surface Mounted Fixed Bollard

Shallow Mounted Fixed Bollard

Arma City Series



Smart Arm Barrier Systems

Arma-212 Arm Barrier (Min. 3m - Max. 5m Arm Length)

Arma-214 PRO Arm Barrier (Max. 4m Arm Length)

Arma-216 PRO Arm Barrier (Min. 3m – Max. 6m Arm Length)

Arma Pro-BanN Arm Barrier (0,7 - 4 sec. Operation Time)

Broken Arm Barrier 90°

Broken Arm Barrier 180°

Half Fence Arm Barrier

Full Fence Arm Barrier

Tire Killers

Hydraulic Tire Killer

Double Sided Automatic Tire Killer

Double Blade Tire Killer

Single Blade Tire Killer

Single Blade Tire Killer with Manual Handle

Surface Mounted Tire Killer

Reverse Direction Tire Killer

Custom Made Barriers

Arma Armored Security Booth

Our References



ArmaKontrol

Group Company

— 2006 —

“Arma Kontrol from 2006”

While establishing Arma Kontrol in 2006, from the beginning goal was to ensure that the whole world recognize of a Turkish company brand in the security sector. When we look at our past, we can see the logo of Arma Kontrol in different projects not only in Turkey but also in many countries of the world as well.

Our products, which are researched, designed and developed by our engineers have successfully awarded with international crash test certifications.

In addition to international crash test certifications, our products also obtained to receive TUV Certification with million cycle series barriers which could perform uninterrupted without any malfunction.

In the beginning, we set off the motto as “Global Barrier Brand”. In this path, we are steadily growing by adding new successes on this long way with our R&D investments, professional staff.

We incorporated our technical service activities in 2019 and founded Arma Teknik Company to coordinate service and technical support to projects which we involved. Also In 2019, we have founded Arma WOC Company, which will produce our software for our products, especially in the field of Access Control Systems and ERP, CRM, B2B, B2C. In 2020, we have founded Arma Park Company, which will operate in the field of smart city security solutions and parking systems. On the way we started with As Arma Kontrol, we became a group that have reached 4 companies named as Arma Group

Firstly we would like to thank to our employees, social stakeholders and business partners who contributed to our growth.

- **ArmaPRO**

High Security Barrier and
Security Booth Systems
Manufacturing



- **ArmaCITY**

Parking Management
Systems and Smart Cities



- **ArmaSOFT**

ERP, CRM, B2B, B2C,
Access Control Software

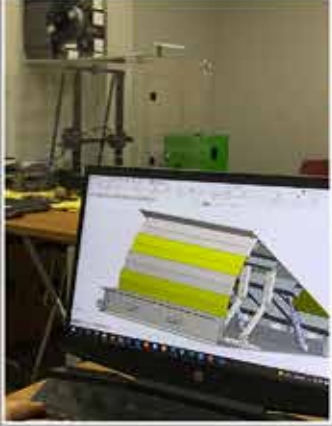


- **ArmaCARE**

Technical Support Services



Mechanic – Electronic – Software – Research & Development - Planning



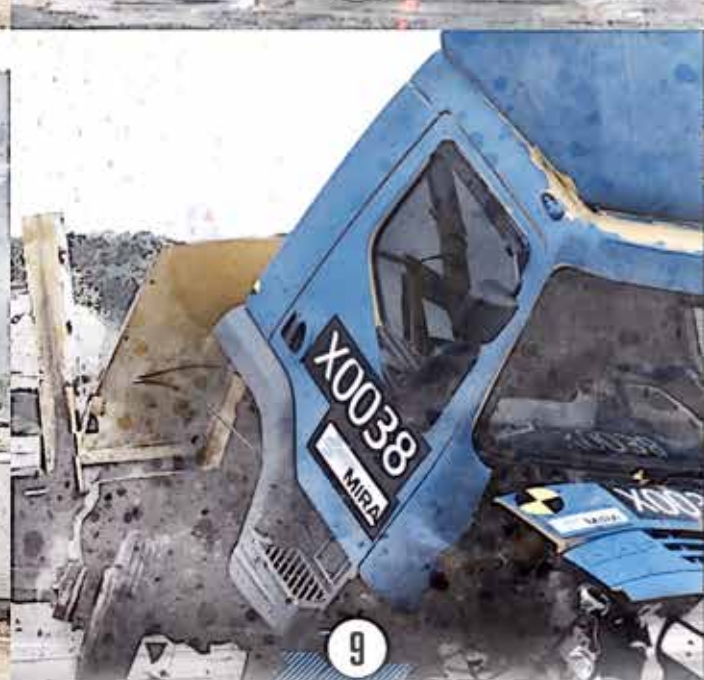
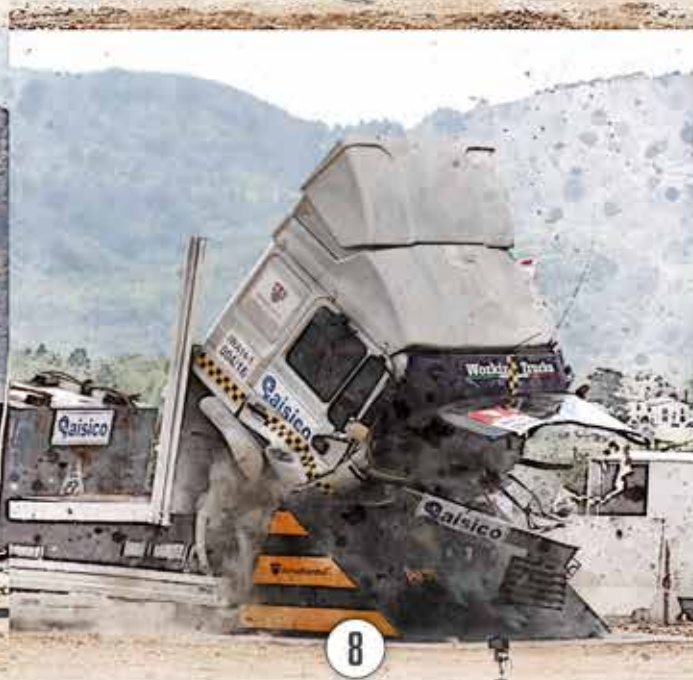
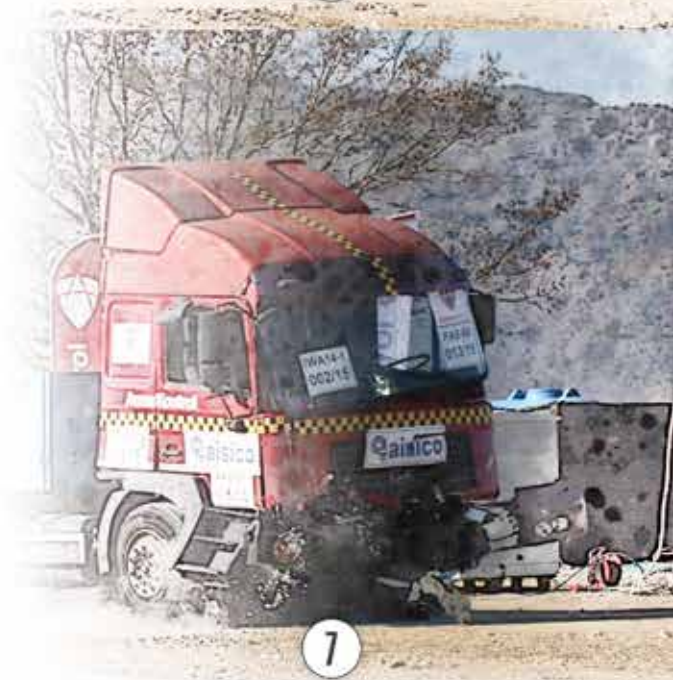


From 2006 to Today

Domestic / International Exhibitions



Crash Test Certified Products





4



5



6



10



11



12



Crash Test - Rating PAS68:2013
British Test Standards
Performed at AISICO SRL
Crash Test Center, Pereto (Aq) - Italy









Crash Test - Rating IWA 14-1:2013
International Workshop Agreement
Performed at Aisico SRL
Crash Test Center, Pereto (Aq) - Italy

What is PAS68?

PAS68 (Publicly Available Specification) is a British standard which determines crash criteria such as test method, vehicle type, penetration measurement in crash tests for the safety & access control industry. Crash tests performed as a result of these standards. It is the most important data in the hands of manufacturers, vendors, and users to evaluate.

What is IWA14-1?

IWA14-1 is a standard in which criteria such as vehicle weight, speed and type are specified; similar to other crash tests schemed by IWA (International Workshop Agreement) & supervised by ISO. The biggest difference of IWA 14-1 with others is that the standard is determined by the joint work of the key manufacturers of this industry. These tests play a major role in the selection of products suitable for the user's needs.

	  British Standards	  USA Standards	  ISO Standards
Vehicle Category	N3	C7	N3C
Vehicle Weight (KG)	7500 kg±150kg	6800 kg±140kg	7200 kg±400kg
Vehicle Speed (km/h)	80	80	80
Vehicle Speed (mph)	50	50	50
kJ Value of Impact	1852	1695	1777



IWA 14.1 & 14.2

European Standard

PART 1: PERFORMANCE

The vehicle impact test method and performance rating.

IWA 14-1:2013 is the International Workshop Agreement which specifies the essential impact performance requirement for a vehicle security barrier (VSB) and a test method for rating its performance when subjected to a single impact by a test vehicle not driven by a human being.

PART 2: APPLICATION

IWA 14-2:2013 provides guidance for the selection, installation and use of vehicle security barriers (VSB) and describes the process of producing operational requirements (OR). It also gives guidance on a design method for assessing the performance of a VSB.



BSI PAS68

British Standard

BSI PAS68 is the BSI's latest Publicly Available Specification for safety barriers.

BSI PAS68 has become the UK's standard and the safety industry's benchmark for vehicle control equipments. In addition, these criteria belong to the specification in which perimeter safety equipment is tested as part of ongoing research to prevent explosive device attacks in access control security measures. BSI PAS69 complements this specification by providing guidance on the installation of the product under test.



ASTM AND DEPARTMENT OF STATE

ABD standartları

ASTM (previously K12 standard) Designation: F 2656-07

Standard Test Method for Vehicle Crash Testing of Perimeter Barriers. This standard superseded the Department of State K ratings, as explained below:

M50-P1 = 6.8t @ 80kph
(15,000lbs @ 50mph)

M40-P1 = 6.8t @ 64kph
(15,000lbs @ 40mph)

M30-P1 = 6.8t @ 48kph
(15,000lbs @ 30mph)

M	50	P1
Test Vehicle (Medium Duty Vehicle 6800kg)	Test Speed (mph)	Penetration (i.e 23-98ft)
M	50	P1 ≤ 1m (3.3ft)
M	40	P2 1.0m to 7m (3.3ft to 23.1ft)
M	30	P3 7.0m to 30m (23.1ft to 98.4ft)
M	20	P4 30m (98ft) or more distant

Test Method: IWA 14-1:2013 V/12000 (N3D)/80/90:0



Counter Terror Road Blocker - 1100mm

(12000 kg - 80 km)

Arma Counter Terror Road Blocker has stopped 12 tons of vehicle which has 80 km speed in crash test which is executed in AISICO Test Site in Italy and works without problem after impact. Our hydraulic Road Blocker successfully passed the crash test and earned IWA 14-1:2013 / PAS 68 crash test certification

Standards:

IWA 14-1:2013 N3D 12000- 80



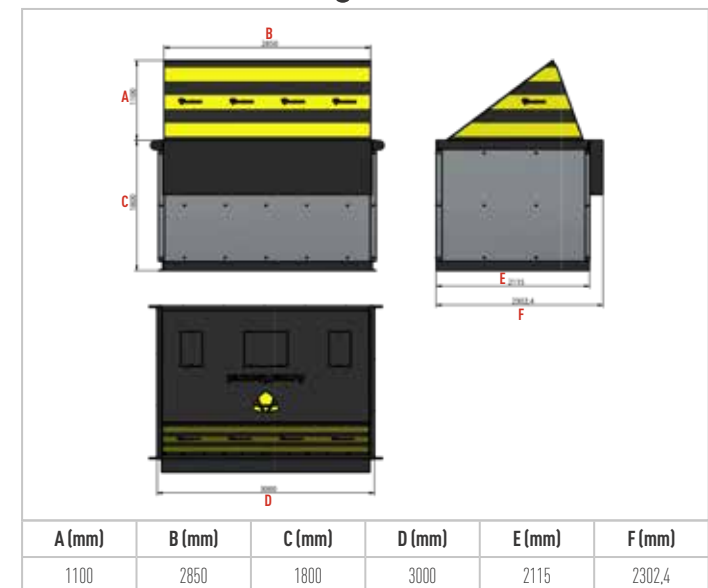
Technical Features

Height	1100mm
Length	2000 - 3000 - 4000 - 5000 - 6000 mm
Wall Thickness	15 mm
Connection Points	M8X15 Stainless Countersunk Inox Bolt
Open - Close Time	6 -8 Seconds
Control Panel	Arma Board
System Safety Support	Loop Detector
Operation Type	Hydraulic
Operation Pressure min.	60 - 100 bar /870 - 1450 psi
Working Temperature	-25 °C / +50 °C
Manuel Lowering	Universal Valve
Manuel Rising	Optional with Manual Hand Pump
Compatibility with Access Control Systems	System is controlled with Arma Board and compatible to operate with any Access Control Systems

Application



Technical Drawing



*Arma Kontrol has right to change information and technical drawing anytime without notice.



Test Method: PAS 68:2013 Blocker V/7500[N3]80/90:-5



Counter Terror Telescopic Road Blocker - 1050mm

(7500 kg / 80 km)

Arma Counter Terror Telescopic Road Blocker has stopped 7.5 tons of vehicle which has 80 km speed in crash test which is executed in AISICO Test Site in Italy and works without problem after impact. Our hydraulic Road Blocker successfully passed the crash test and earned IWA 14-1:2013 / PAS 68 crash test certification



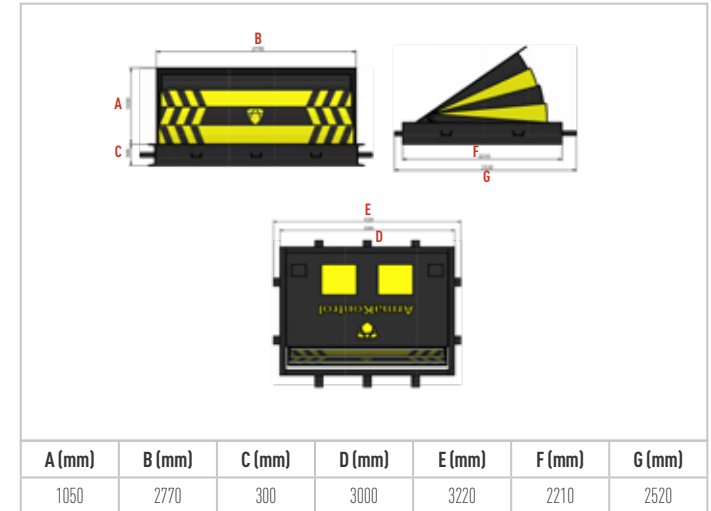
Technical Features

Height	1050mm
Length	2000 - 3000 - 4000 mm
Wall Thickness	10 mm
Operation Type	Hydraulic Driven
Power	3ph AC 380V (±10) 50/60 Hz.
Operation Time	6 - 8 Seconds
Operation Temperature	-25° C - +50° C
Safety Support	Loop Detector
Manual Lowering	Universal Valve
Compatibility with Access Control Systems	System is controlled with Arma Board and compatible to operate with any Access Control Systems
Crash Test Report	IWA 14-1:2013 V/7500[N3C]/80/90:0

Application



Technical Drawing



*Arma Kontrol has right to change information and technical drawing anytime without notice.



Test Method: PAS 68:2013 Bollard V/7500[N3]/80/90:0.9/19

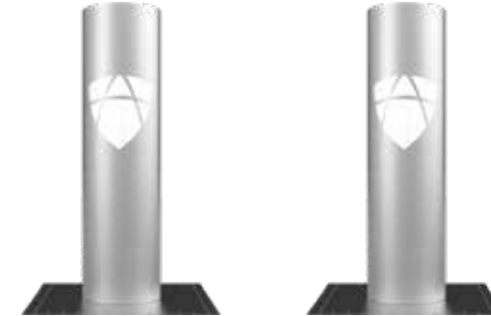


Counter Terror Rising Bollard - 1100mm

(7500 kg / 80 km)

Arma Counter Terror Rising Bollard are impact-resistant, high security systems that specially designed to prevent the access of unauthorized vehicles.

Arma Counter Terror Rising Bollard has stopped 7.5 ton of vehicle which has 80 km speed in crash test which is executed in AISICO Test Site in Italy. Our hydraulic Road Blocker succesfully passed the crash test and earned IWA 14-1:2013 / PAS 68 crash test certification



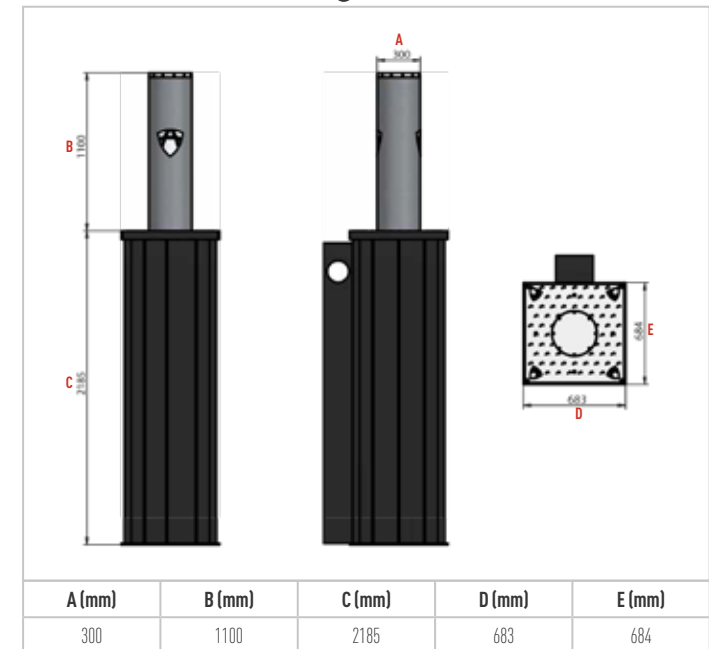
Technical Features

Height	1100mm
Diameter	300mm
Wall Thickness	35mm
Movable Part Metal Sheet Type	ST44
Finish	AISI 304 /316 Stainles Steel
Operation Type	Hydraulic Driven
Motor Power	2.2 to 7.5 Kw
Power	3 Phase AC 400 X (1±10%)V 50/60Hz
Open - Close Time	6 - 8 seconds
Axle Load	30 Tons
Impact Resistance	1902.66 KJ
Control Panel	Arma Board
Operation Temperature	-25° C - +50° C
System Safety Support	Loop Detector
Compatibility with Access Control Systems	System is controlled with Arma Board and compatible to operate with any Access Control Systems

Application



Technical Drawing



*Arma Kontrol has right to change information and technical drawing anytime without notice.



Test Method: PAS 68:2013 Bollard V/7500[N3]/65/90:-0.2



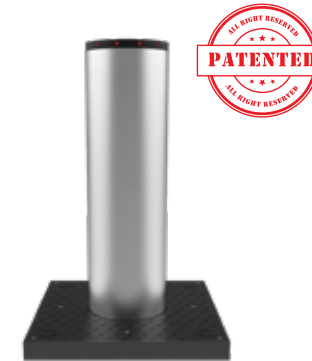
Counter Terror Rising Bollard 900mm

(7500 kg / 65 km)

Arma Counter Terror Rising Bollard Barriers are impact-resistant, high security systems that specially designed to prevent the access of unauthorized vehicles.

Arma Counter Terror Rising Bollard has stopped 7.5 ton of vehicle which has 65 km speed in crash test which is executed in AISICO Test Site in Italy.

Our hydraulic Road Blocker succesfully passed the crash test and earned IWA 14-1:2013 / PAS 68 crash test certification



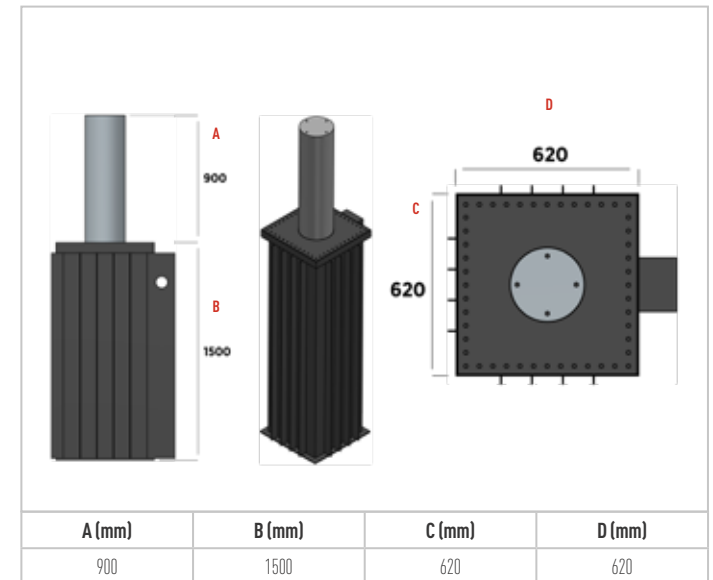
Technical Features

Height	900mm
Diameter	273mm
Wall Thickness	16mm
Finish	AISI 304 /316 Stainles Steel
Inner Sleeve	Hot Dip Galvanized
Operation Type	Hydraulic Driven
Power	3ph AC 380V (±10) 50/60Hz
Open - Close Time	6 - 8 seconds
Impact Resistance	1224 kJ
Control Panel	Arma Board
Safety Support	Loop Detector
Operation Temperature	-25° C - +50° C
Compatibility with Access Control Systems	System is controlled with Arma Board and compatible to operate with any Access Control Systems

Application



Technical Drawing



*Arma Kontrol has right to change information and technical drawing anytime without notice.



Test Method: PAS 68:2013 V/7500(N3)/80/90:3.8/21.4



Counter Terror Fixed Bollard / 457 Diameter

Arma Counter Terror Fixed Bollard has stopped 7.5 ton of vehicle which has 80 km speed in crash test which is executed on CSI Test Site in Italy. Because of success on crash test, our hydraulic bollard has earned IWA 14-1:2013 / PAS 68 crash test certification.



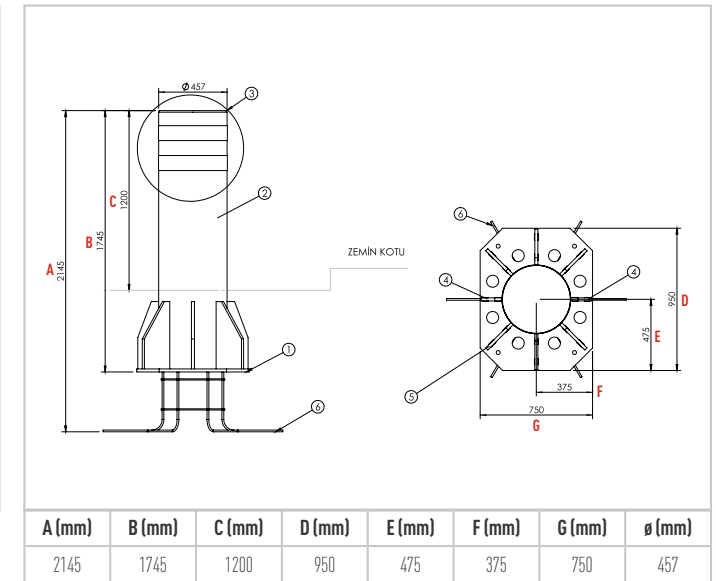
Technical Features

Bollard Diameter	Ø 457 mm
Bollard Height	1200 mm
Wall Thickness	9,5 mm
Fix Part	Powder Coating / 304-316 Stainless
Warranty Perriod	2 Year
Extented Warranty	Available
Spare Part Supply Warranty	10 Year
Crash Test Report	PAS 68:2013 V/7500(N3)/80/90:3.8/21.4

Application



Technical Drawing



*Arma Kontrol has right to change information and technical drawing anytime without notice.

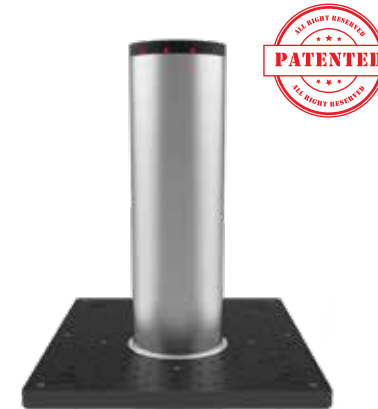


Test Method: PAS 68 V/7500[N2]/48/90:0.2/3.5



Counter Terror Rising Bollard 700 mm

Arma Counter Terror Rising Bollard has stopped 7.5 ton of vehicle which has 48 km speed in crash test which is executed on HORIBA MIRA Test Site in United Kingdom. Because of success on crash test, our hydraulic bollard has earned IWA 14-1:2013 / PAS 68 crash test certification.



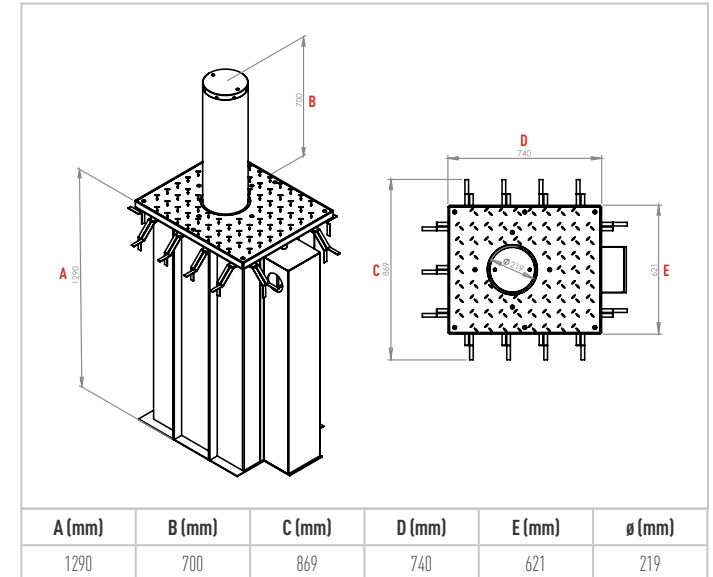
Technical Features

Bollard Height	700 mm
Bollard Diameter	219 mm
Wall Thickness	16mm
Moving Part	304-316 Stainless
Inner Sleeve	Hot-dip galvanized
Drive Movement	Hydraulic Driven
Power Supply Three-Phase	3ph AC 380V (±10) 50/60Hz
Rising / Falling Time	6-8 sec
Impact Energy	640 KJ
Control Panel	Arma Board [EE51KAR]
Security Feature	Loop Sensor and Detection Systems
Operation Temperature	-25° C - +60° C
Warranty Period	
Extended Warranty	
Spare Part Supply Warranty	10 year
Counter-Terror Rising Bollard is compatible with Arma Kart for all Access Control Systems.	
Crash Test Report	PAS 68 V/7500[N2]/48/90:0.2/3.5

Application



Technical Drawing



*Arma Kontrol has right to change information and technical drawing anytime without notice.



Test Method: PAS 68 V/7500[N3]/48/90:1.02/0.0



Counter Terror Road Blocker 700 mm

Arma Counter Terror Road Blocker has stopped 7.5 tons of vehicle which has 48 km speed in crash test which is executed on Mira Test Site in United Kingdom and works without problem after impact. Because of success on crash test, our hydraulic bollard has earned IWA 14-1:2013 / PAS68 crash test certification.



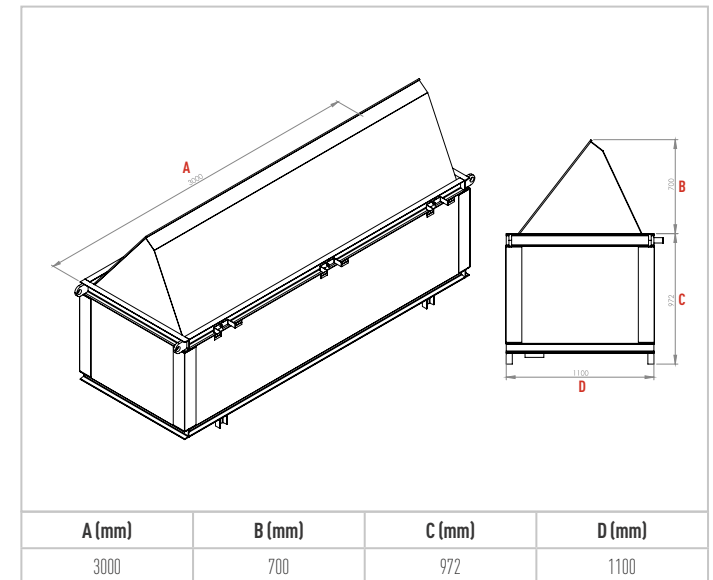
Technical Features

Height	700 mm
Width	2000 - 3000 - 4000 - 5000 - 6000 mm
Wall Thickness	10 mm
Cover Plate	Galvanized
Movement Mechanism	Hydraulic
Power Supply	3ph AC 380V (±10) 50/60 Hz.
Operating Speed	4 - 6, 6 - 8 sec
Control Panel	Arma Board [EE51KAR]
Security Feature	Loop Sensor and Detection Systems
Warranty Period	3 year
Extented Warranty	Available
Spare Part Supply Warranty	10 year
Crash Test Report	PAS 68 V/7500[N3]/48/90:1.02/0.0

Application



Technical Drawing



*Arma Kontrol has right to change information and technical drawing anytime without notice.



Test Method: PAS 68:2013 V/7500[N3]/80/90:6.2



Counter Terror Fixed Bollard

Arma Counter Terror Fixed Bollard has stopped 7.5 ton of vehicle which has 80 km speed in crash test which is executed on AISICO Test Site in Italy. Because of success on crash test, our hydraulic bollard has earned IWA 14-1:2013 / PAS 68 crash test certification.



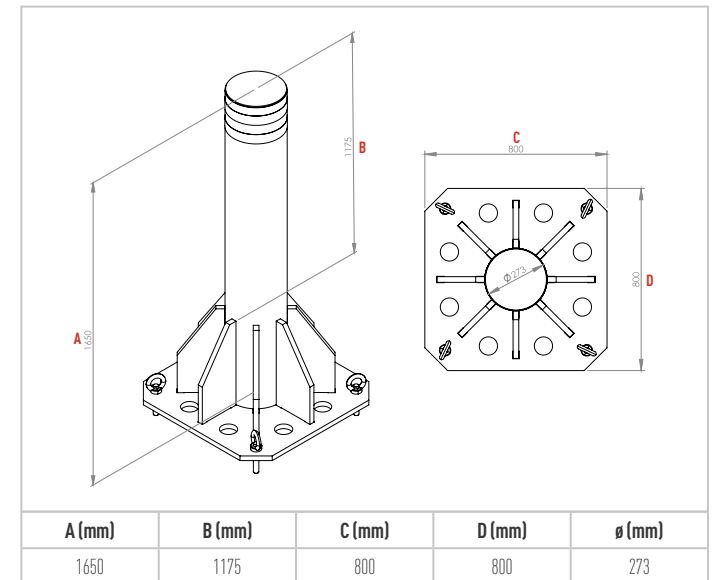
Technical Features

Bollard Diameter	Ø 273 mm
Bollard Height	1100 mm
Wall Thickness	30 mm
Fix Part	Powder Coating / 304-316 Stainless
Warranty Period	2 year
Extented Warranty	Available
Spare Part Supply Warranty	10 year
Crash Test Report	PAS 68:2013 V/7500(N3)/80/90:6.2

Application



Technical Drawing



*Arma Kontrol has right to change information and technical drawing anytime without notice.



PAS 68:2013 V/7500(N3)/80/90:0.3



Counter Terror Shallow Mounted Fixed Bollard

Arma Counter Terror Shallow Mounted Fixed Bollard has stopped 7.5 ton of vehicle which has 80 km speed in crash test which is executed on HORIBA MIRA Test Site in United Kingdom. Because of success on crash test, our hydraulic bollard has earned IWA 14-1:2013 / PAS 68 crash test certification.



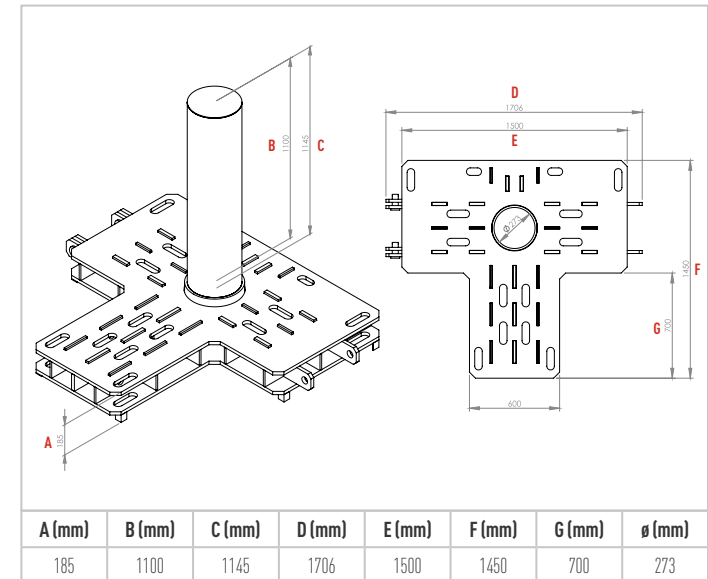
Technical Features

Bollard Diameter	Ø 273 mm
Bollard Height	1100 mm
Wall Thickness	25 mm
Fix Part	Powder Coating / 304-316 Stainless
Warranty Period	2 year
Extented Warranty	Available
Spare Part Supply Warranty	10 year
Crash Test Report	PAS 68:2013 V/7500(N3)/80/90:0.3

Application

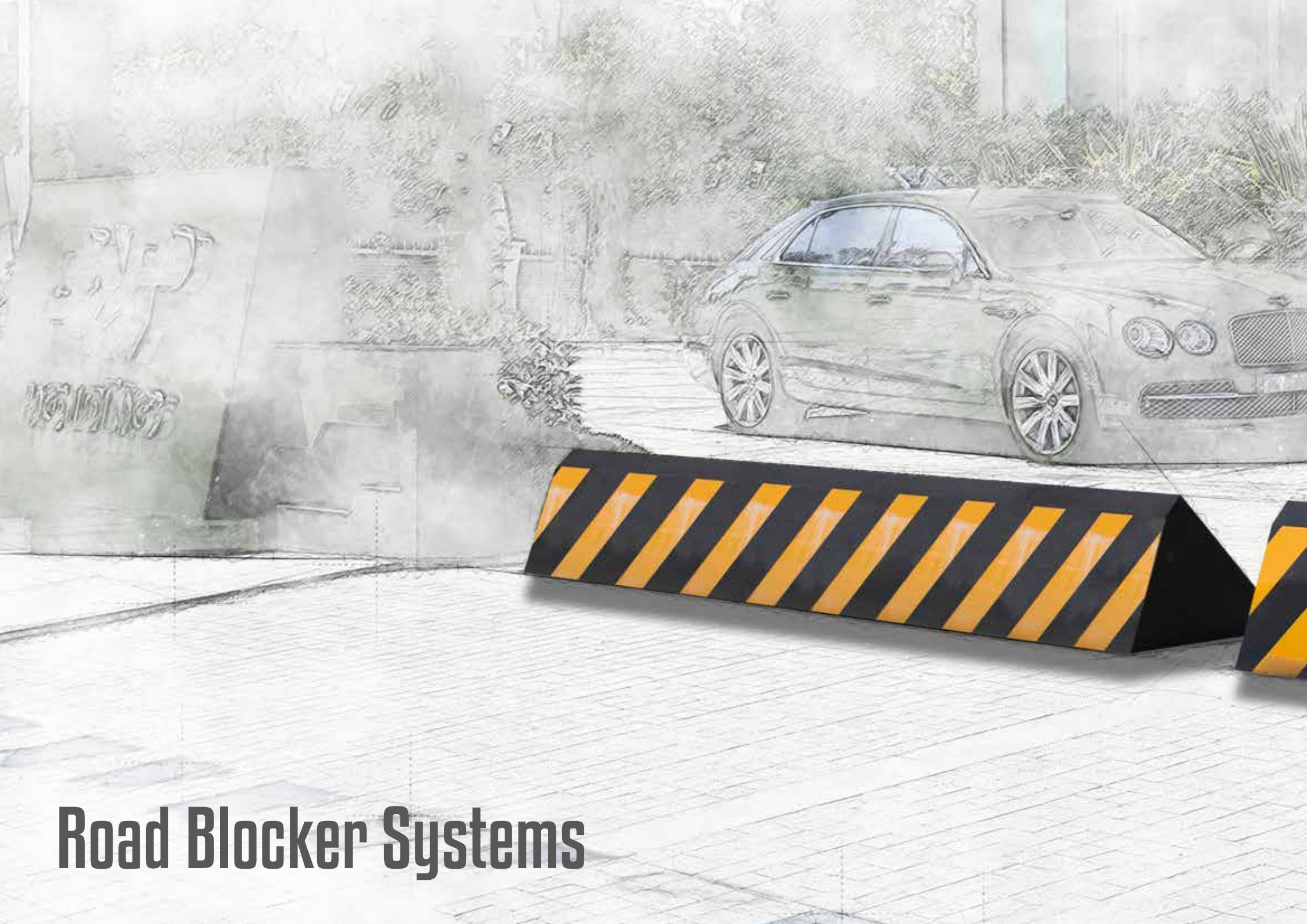


Technical Drawing



*Arma Kontrol has right to change information and technical drawing anytime without notice.





Road Blocker Systems



Road Blocker

Road Blocker is the most commonly-used system in the areas where the entries-exits must be controlled and safe manner against any vehicle attacks such as military facilities, government buildings, embassies, production facilities, oil refineries, hotels, airports and stadiums. System's case is designed as resistant to hits by vehicles, and all relevant components of the systems are strengthened against any attacks. Arma Kontrol Blocker System work uninterruptedly even at the highest-density places thanks to the hydraulic operation system. This system can be synchronized with the rising bollard or other safety systems and keeps the defense at the maximum level in case of possible attacks, and thus ensures the secure entrance of the vehicles into relevant areas.



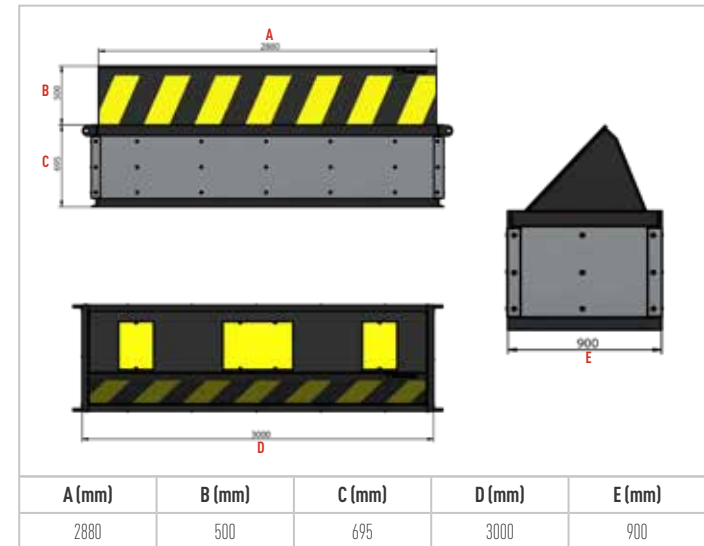
Technical Features

Height	500 – 600 – 700 – 800 – 900 – 1000 mm
Length	2000 – 3000 – 4000 – 5000 – 6000 mm
Wall Thickness	10mm
Movable Part Material	ST 37
Operation Type	Hydraulic Driven
Power	3ph AC 380V (±10) 50/60 Hz.
Open - Close Time	6 - 8 seconds
Control Panel	Arma Board
Safety Support	Loop Detector
Working Temperature	-25 °C / +50 °C
Manuel Lowering	Universal Valve
Compatibility with Access Control Systems	System is controlled with Arma Board and compatible to operate with any Access Control Systems

Application



Technical Drawing



*Arma Kontrol has right to change information and technical drawing anytime without notice.



Telescopic Road Blocker

Telescopic Road Blocker systems are specially produced and suitable for areas where there is a risk and infrastructure problem. Telescopic Road Blocker are strengthened to prevent unauthorized vehicle entries, such like Road Blocker Systems.

Telescopic Road Blocker could be manufactured with different, length, height and wall thickness regarding to perimeters requirement or security level. In high security places, system could be controlled by authorized personnel which is operated by password algorithm control card. Also, it could be worked with mobile applications with Arma WOC software or system could be operated from one center such like PC or SCADA systems.



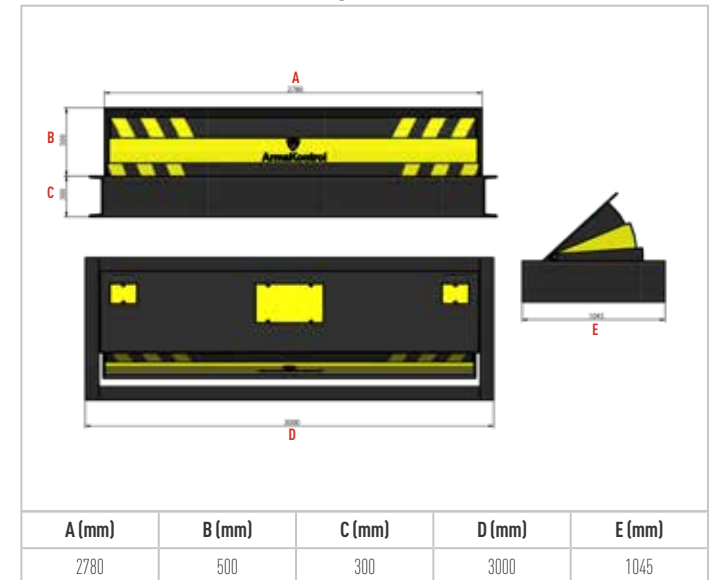
Technical Features

Height	500 - 600 - 700 - 800 - 900 mm
Length	2000 - 3000 - 4000 mm
Foundation Depth	250 - 300 mm
Wall Thickness	10 mm
Movable Part Material	ST 37
Operation Type	Hydraulic Driven
Power	3ph AC 380V (±10) 50/60 Hz.
Operation Temperature	-25° C - +50° C
Open - Close Time	6 - 8 seconds
Control Panel	Arma Board
Manual Lowering	Universal Valve
Safety Support	Loop Detector
Compatibility with Access Control Systems	System is controlled with Arma Board and compatible to operate with any Access Control Systems

Application



Technical Drawing



*Arma Kontrol has right to change information and technical drawing anytime without notice.



Mini Road Blocker

Arma Kontrol Mini Road Blocker are designed as an alternative to Hydraulic Bollards.

Mini Road Blocker designed to operate in harsh weather conditions and impacts such like Road Bloker Systems. With it strengthen structure, Mini Road Blocker are used to prevent unauthorized vehicles entry and exit. Road Blocker could be manufactured with different length, height and wall thickness regarding to perimeters requirement or security level. In high security places, system could be controlled by authorized personnel which is operated by password algorithm control board. Also, it could be worked with mobile applications with Arma WOC software or system could be operated from one center such like PC or SCADA systems.



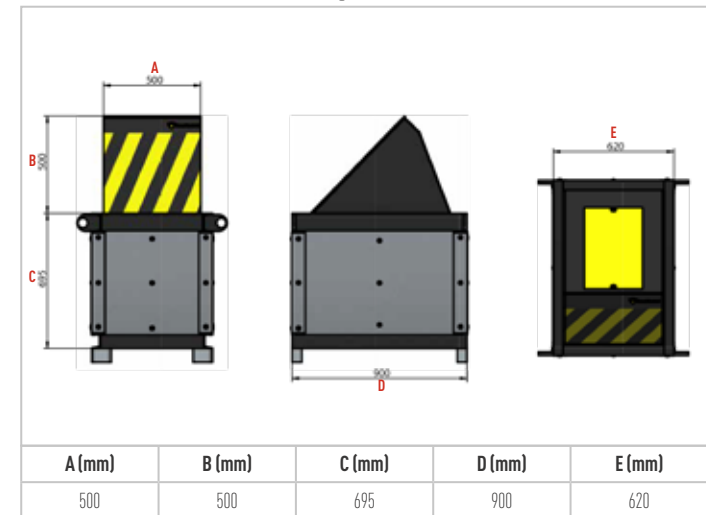
Technical Features

Height	500 mm
Length	620 mm
Movable Part Metal Sheet Type	ST 37
Operation Type	Hydraulic Driven
Power	3 ph AC 380V (±10) 50/60 Hz.
Open - Close Time	4 - 6 seconds
Control Panel	Arma Board
Safety Support	Loop Detector
Working Temperature	-25 °C / +50 °C
Manual Lowering	Universal Valve
Compatibility with Access Control Systems	System is controlled with Arma Board and compatible to operate with any Access Control Systems

Application



Technical Drawing



*Arma Kontrol has right to change information and technical drawing anytime without notice.



Giant Road Blocker

(1500mm)

Arma Kontrol Giant Road Blocker is designed to prevent entry and exit of unauthorized vehicles where security level is high. It is strongest and the lightest product of segment. Front sheet is being covered with ultra-hard steel armor. It provides high endurance to all ballistic type of bullets. (BR2-BR3-BR4-BR5-BR6-BR7). Also, it can send info about status report and malfunction alert. It is hydraulic driven, and height is 1500 mm from surface. In case of unauthorized interference, system locks itself. In case of power failure, power back up system could be added to sustain uninterrupted operation. It could be integrated and operated with any kind of Access Control Systems (GSM, RFID, Card Readers, etc.).



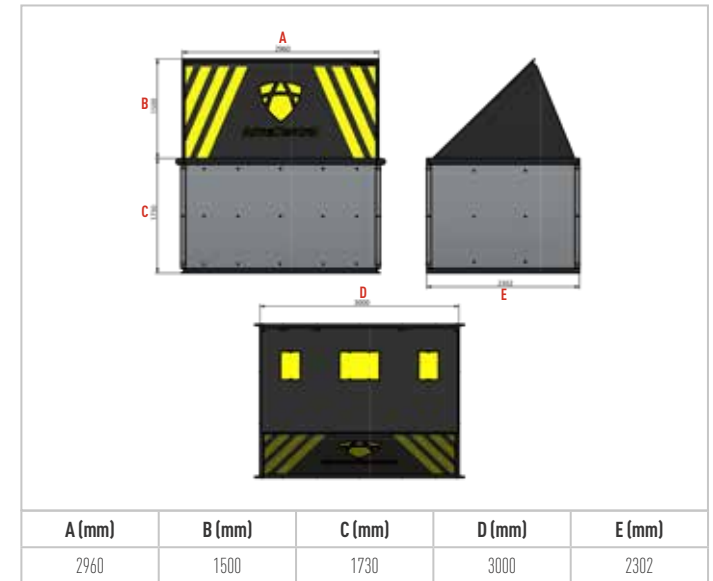
Technical Features

Height	1500 mm
Length	2000 - 3000 - 4000 mm
Foundation Depth	2000 mm
Wall Thickness	10 mm
Movable Part Material	ST 37
Operation Type	Hydraulic Driven
Power	3ph AC 380V (±10) 50/60 Hz.
Operation Temperature	-25° C - +50° C
Open - Close Time	6 - 8 sn
Control Panel	Arma Board
Manual Lowering	Universal Valve
Safety Support	Loop Detector
Compatibility with Access Control Systems	System is controlled with Arma Board and compatible to operate with any Access Control Systems

Application



Technical Drawing



*Arma Kontrol has right to change information and technical drawing anytime without notice.

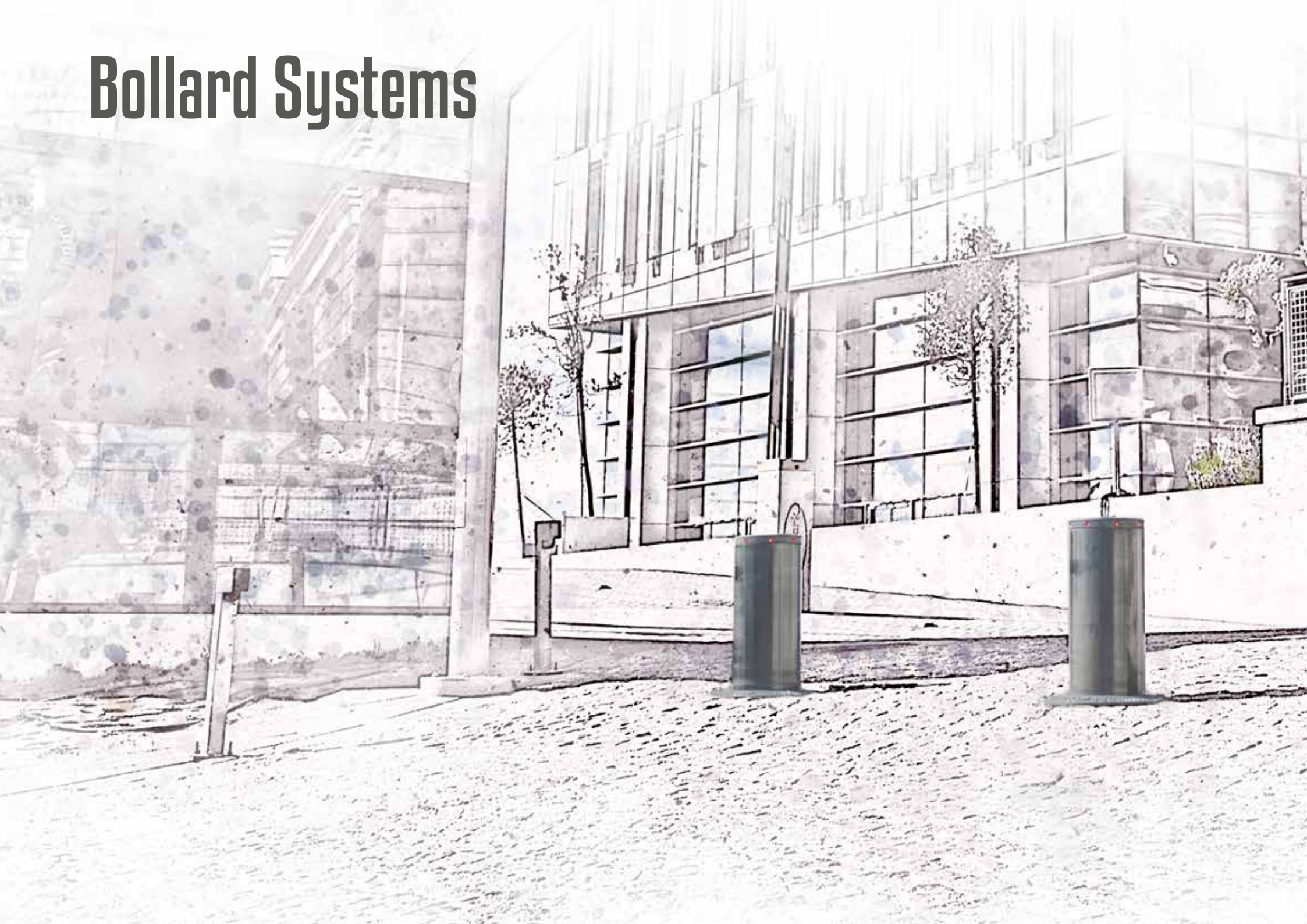


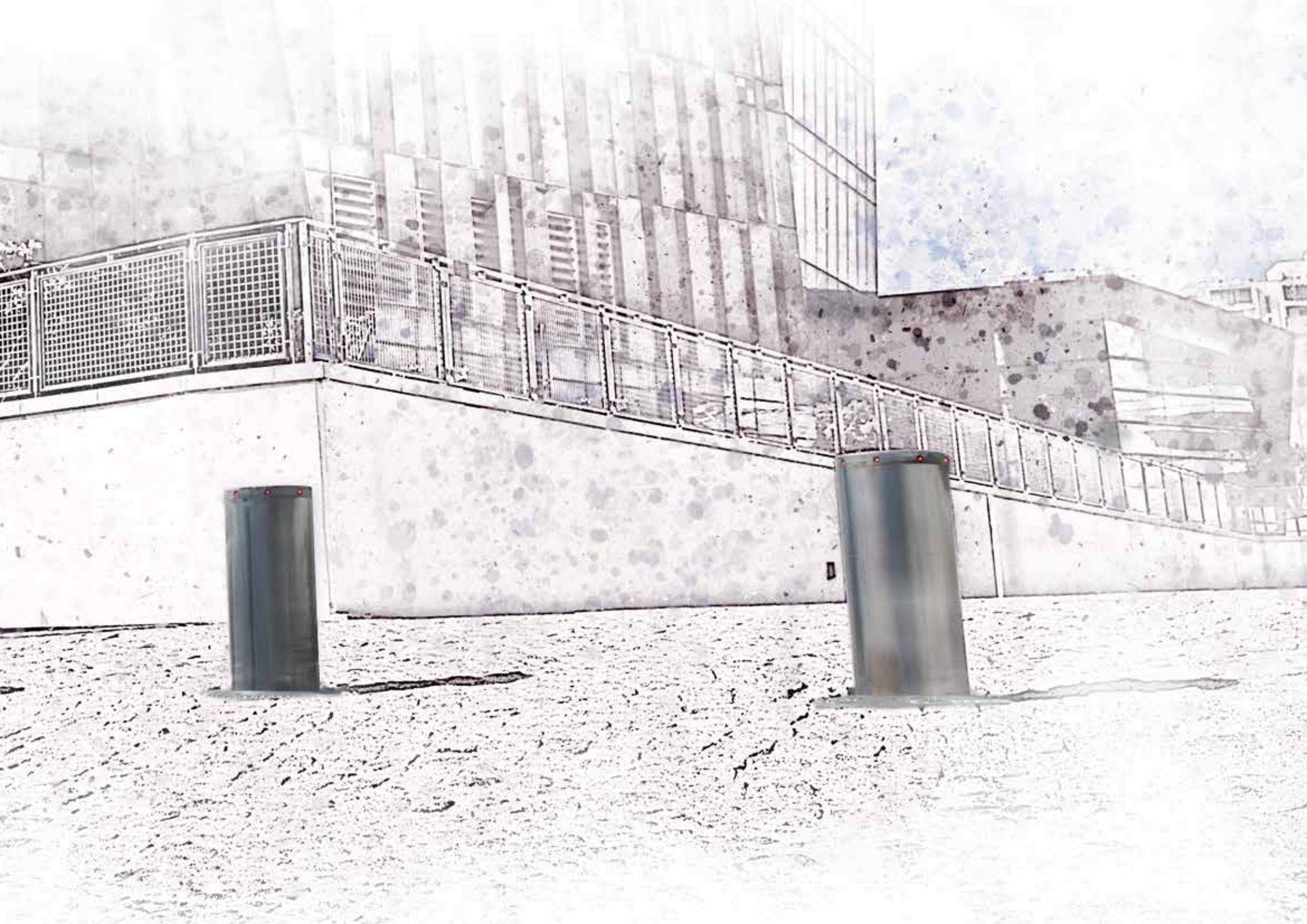


Are you ready for 360° Virtual Showroom Experience?



Bollard Systems





A First in the World!

Uninterrupted operation time

14,5 months, 433 days, 10392 hours

And still working.



2.000.000 Uninterrupted Open/Close Warranty
Without Maintenance

It is certified by operating system motor uninterruptedly in TUV Austria Laboratories.

Arma**PRO**

Arma**CITY**

Arma**SOFT**

Arma**CARE**



Arma Hydraulic Bollard – A Serie

Arma Hydraulic Bollards resistant to impacts and weather conditions are manufactured from European norm 304 Quality Stainless pipes with advanced technology. It prevents unauthorized entries and exits of vehicles with strong structure. Hydraulic Bollards could be manufactured with different diameter, height or wall thickness regarding to perimeters security level. In high security places, system could be controlled by authorized personnel which is operated by password algorithm control board. Also, it is applicable to work with any access control system and it could be operated by mobile applications with Arma WOC software or system could be operated from one center such like PC or SCADA systems.



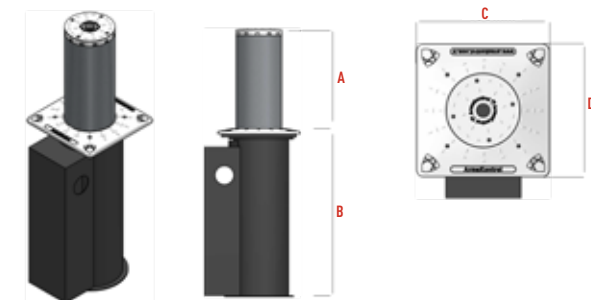
Technical Features

Diameter	Ø 219 - 273 mm
Height	500 - 700 - 900 - 1100 mm
Wall Thickness	8 - 10 - 16 - 25 mm
Finish	AISI 304 /316 Stainles Steel
Inner Sleeve	Hot Dip Galvanized
Operation Type	Hydraulic Driven
Power	3ph AC 380V (±10) 50/60Hz
Open - Close Time	6 - 8 seconds
Control Panel	Arma Board
Safety Support	Loop Detector
Working Temperature	-25 °C / +50 °C
Manual Lowering	Universal Valve
Compatibility with Access Control Systems	System is controlled with Arma Board and compatible to operate with any Access Control Systems

Application



Technical Drawing



A (mm)	B (mm)	C (mm)	D (mm)
500	790	400	400

*Arma Kontrol has right to change information and technical drawing anytime without notice.



Arma Hydraulic Bollard – C Serie

Arma C Serie Hydraulic Bollards are designed for places where has low security necessities such as pedestrianization projects, special park areas. It works uninterruptedly for many years because of its structure which has being produced with stainless steel drawn steel pipes of European standards. Arma C Serie Hydraulic Bollards are manufactured with 219 mm diameter and height from 500 mm to 700 mm which is strong with its features, performance, and impact resistance against competitor products. Hydraulic Bollard System is compatible with any access control systems such as RFID, Card Readers, Tablets, PC, Mobile App and SCADA with its special Arma WOC Software and all system could be controlled from one center



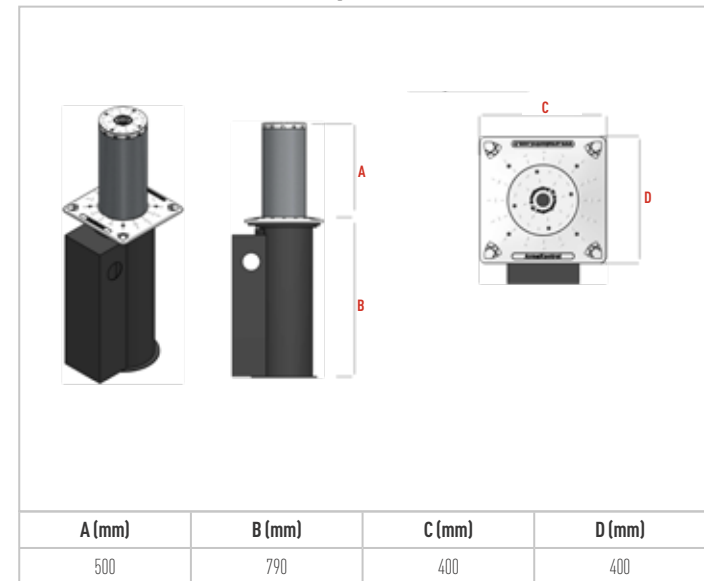
Technical Features

Diameter	Ø 219 - 273 mm
Height	500 - 700 mm
Wall Thickness	8 - 10 - 16 - 25 mm
Finish	AISI 304 /316 Stainles Steel
Inner Sleeve	Hot Dip Galvanized
Operation Type	Hydraulic
Power	3ph AC 380V (±10) 50/60Hz
Open - Close Time	6 – 8 seconds
Control Panel	Arma Board
Safety Support	Loop Detector
Working Temperature	-25 °C / +50 °C
Manual Lowering	Universal Valve
Compatibility with Access Control Systems	System is controlled with Arma Board and compatible to operate with any Access Control Systems

Application



Technical Drawing



*Arma Kontrol has right to change information and technical drawing anytime without notice.



Telescopic Rising Bollard

Telescopic Rising Bollard systems are specially produced and suitable for areas where there is a risk and infrastructure problem. Telescopic Rising Bollards are strengthened to prevent unauthorized vehicle entries such like Hydraulic Bollard Systems. Rising Telescopic Bollards could be manufactured with different diameter, height or wall thickness regarding to perimeters security level. In high security places, system could be controlled by authorized personnel which is operated by password algorithm control board. Also, it is applicable to work with any access control system, and it could be operated by mobile applications with Arma WOC software or system could be operated from one center such like PC or SCADA systems.



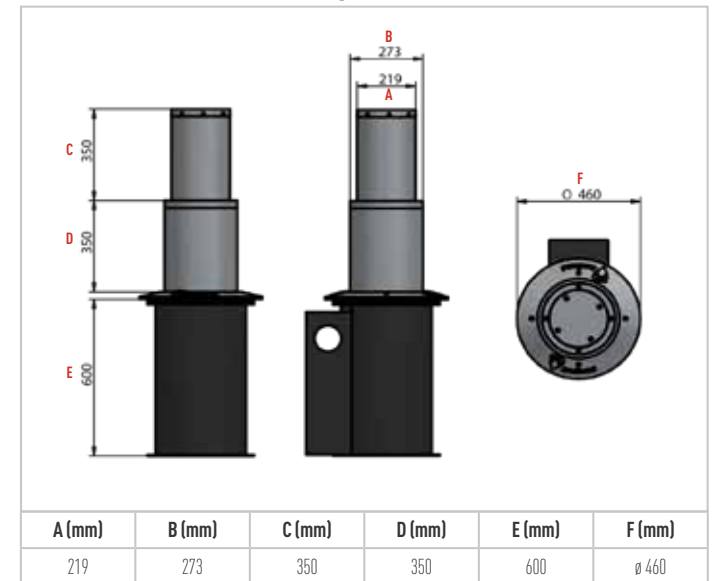
Technical Features

Diameter	Ø 219-273 / 273-323 mm
Foundation Depth	450 -600 mm
Height	500 - 700 mm
Wall Thickness	16 - 20 -40 mm
Finish	AISI 304 /316 Stainles Steel
Operation Type	Hydraulic Driven
Power	3ph AC 380V (±10) 50/60Hz
Open - Close Time	6 - 8 Seconds
Control Panel	Arma Board
Safety Support	Loop Detector
Working Temperature	-25 °C / +50 °C
Manual Lowering	Universal Valve
Compatibility with Access Control Systems	System is controlled with Arma Board and compatible to operate with any Access Control Systems

Application



Technical Drawing



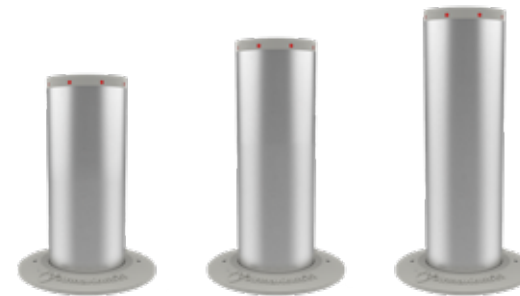
*Arma Kontrol has right to change information and technical drawing anytime without notice.



Pneumatic Bollard Systems

Arma Pneumatic Bollards are being operated by air pressure driven with air compressor. Hydraulic Bollard mechanical designs are being used on pneumatic bollards. Arma Pneumatic Bollards resistant to impacts and weather conditions are manufactured from European norm 304 Quality Stainless pipes with advanced technology. Pneumatic bollards have some essential differences than hydraulic bollards. These are operation type (air pressure), intensity of sound (louder noise level) and higher maintenance process frequency.

It is applicable to work with any access control system, and it could be operated by mobile applications with Arma WOC software or system could be operated from one center such like PC or SCADA systems.



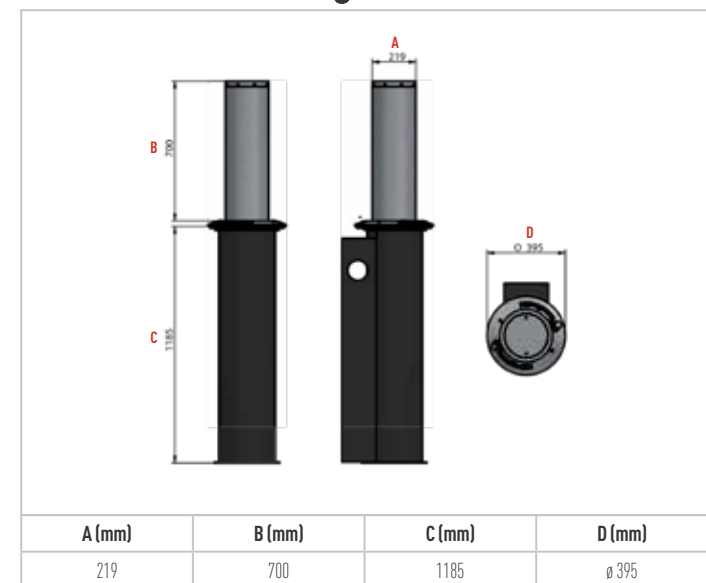
Technical Features

Diameter	Ø 219 - 273 mm
Height	500 - 700 - 900 mm
Wall Thickness	8 - 10 - 16 mm
Finish	AISI 304 /316 Stainles Steel
Inner Sleeve	Hot Dip Galvanized
Operation Type	Air Pressure Driven
Power	Monophase AC 220V (±10) 50/60Hz
Open - Close Time	4 - 6 seconds
Control Panel	Arma Board
Safety Support	Loop Detector
Working Temperature	-25 °C / +50 °C
Manual Lowering	Universal Valve
Compatibility with Access Control Systems	System is controlled with Arma Board and compatible to operate with any Access Control Systems

Application



Technical Drawing



*Arma Kontrol has right to change information and technical drawing anytime without notice.



Built-In Hydraulic Bollard

Arma Kontrol Built-In Hydraulic Unit bollard system are one of the most desired products, which is resistant to impacts and weather conditions. One of the important features that creates difference: All system integrated which electrical and hydraulic units are inside bollard case. Because of its modular design, no steel panel is required to install on site. R&D process is finalized by Arma Kontrol. Operation performance is designed to work 7/24 for years which is certified by TUV Austria Test Authority. It has IP68 grade certified protection which allows product to operate under water. It is applicable to work with any access control system, and it could be operated by mobile applications with Arma WOC software or system could be operated from one center such as PC or SCADA systems



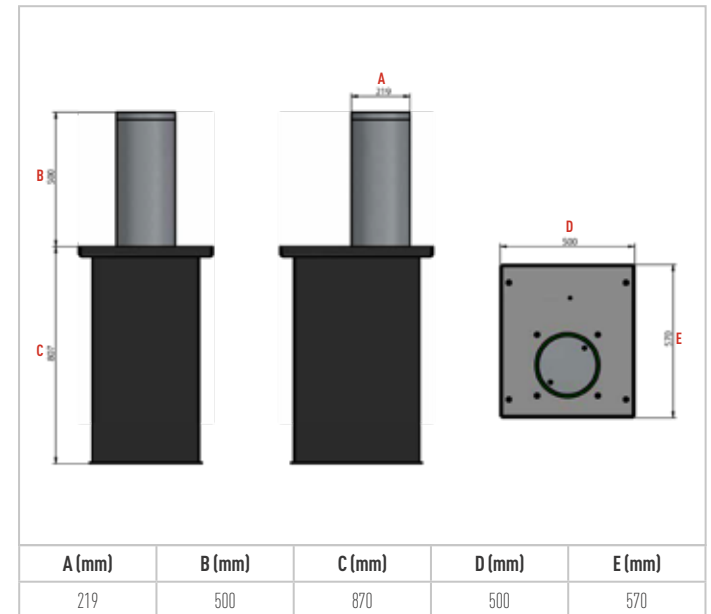
Technical Features

Diameter	Ø 219 - 273 mm
Height	500 - 700 - 900 - 1100 mm
Wall Thickness	10 - 14 - 25 mm
Finish	AISI 304 /316 Stainles Steel
Inner and Outer Sleeve	Hot Dip Galvanized
Connection Points	M8 x 30 Hex Socket Head Bolt (Stainless Steel)
Open - Close Time	6 - 8 Seconds
Operation Type	Hydraulic
Power	220V AC
Control Panel	Arma Board
Safety Support	Loop Detector
Working Temperature	-25 °C / +50 °C
Manual Lowering	Universal Valve
Compatibility with Access Control Systems	System is controlled with Arma Board and compatible to operate with any Access Control Systems

Application



Technical Drawing



*Arma Kontrol has right to change information and technical drawing anytime without notice.



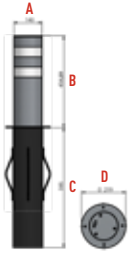
Gas Powered Manual Bollard

Arma Gas Powered Manual Bollard is a bollard system which works with piston with gas and a special key. Once system desired to open, user will use key to unlock Gas Powered Manual Bollard and piston rises automatically with the gas pressure in it. Once system is desired to close to allow passage of vehicles, user will step on bollard. When Gas Powered Manual Bollard system is fully closed, system locks itself. This system could be used as an alternative solution on malls, sidewalks and commercial places because of its practical usage and easy installation.

Technical Features

Diameter	Ø 76 - 89 - 114 - 219 mm
Height	500 mm - 700 mm
Wall Thickness	4 - 6 - 8 mm
Movable Part	Electrostatic Powder Paint / 304 - 316 Stainless Steel
Outer Sleeve	Hot Dip Galvanized.
Connection Points	M8 x 30 Hex Socket Head Bolt (Stainless Steel)
Operation Type	Gas Piston / Auto Locking System
Operation Temperature	-25 °C / +50 °C

Technical Drawing

	A (mm)	140
	B (mm)	454,89
	C (mm)	595
	D (mm)	Ø 219



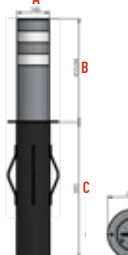
Mechanical Manual Bollard

Arma Mechanical Manual Bollard is a bollard system which mechanically works with a special key system. Main difference between Mechanical Manual Bollard and Semi-Automatic Bollard is opening method. Once key is unlocked, user must pull bollard to top to open system. Manual Bollard System could work uninterruptedly for years without maintenance because of its mechanical design. Mechanical Manual Bollard System don't needs any electrical necessity.

Technical Features

Diameter	Ø 76 - 114 - 140 - 219 mm
Height	500 - 600 - 700 mm
Wall Thickness	4 - 6 - 8 mm
Movable Part	Electrostatic Powder Paint / 304 - 316 Stainless Steel
Outer Sleeve	Hot Dip Galvanized.
Connection Points	M8 x 30 Hex Socket Head Bolt (Stainless Steel)
Operation Type	Manual / Automatic Lock
Operation Temperature	-25 °C / +50 °C

Technical Drawing

	A (mm)	140
	B (mm)	455,04
	C (mm)	595
	D (mm)	Ø 219



*Arma Kontrol has right to change information and technical drawing anytime without notice.

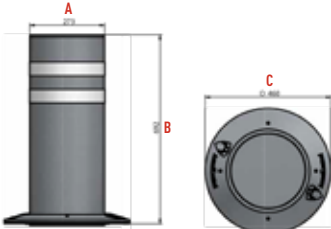
Surface Mounted Fixed Bollard

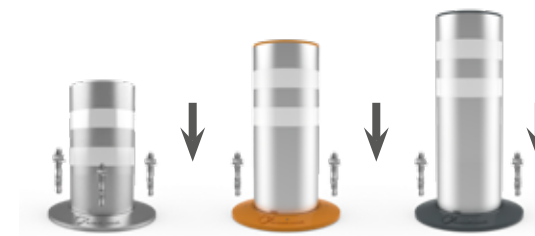
Arma Surface Mounted Fixed Bollards, which is resistant to weather conditions and impacts are commonly used on public and private areas. This type of bollard could be manufactured with variable height & diameter regarding to necessities of secured areas. Installation of Surface Mounted Fixed Bollards is fixing to surface withbolts. Arma Kontrol Surface Mounted Fixed Bollards adds value to architectural projects besides providing security.

Technical Features

Diameter	Ø 76 - 89 - 114 - 219 - 273 - 300 - 323 mm
Height	500 - 600 - 700 - 900 - 1000 mm
Wall Thickness	4 - 8 - 10 - 14 - 20 - 26 - 30 - 40 mm
Operation Type	Fixed, Product could be disassembled when necessary
Connection Points	M10 x 100 Lag Screw
Fixed Section	Electrostatic Powder Paint / 304 - 316 Stainless Steel

Technical Drawing

	A (mm)	273
	B (mm)	692
	C (mm)	Ø 460



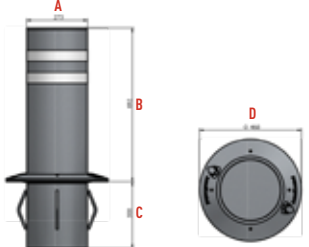
Deep Mounted Fixed Bollard

Arma Deep Mounted Fixed Bollards, which is resistant to weather conditions and impacts are commonly used on public and private areas. This type of bollard could be manufactured with variable height & diameter regarding to necessities of secured areas. Installation of Deep Mounted Fixed Bollards are with removable concreting - fixing to foundation. Arma Kontrol Surface Mounted Fixed Bollards adds value to architectural projects besides providing security

Technical Features

Diameter	Ø 76 - 89 - 114 - 219 - 273 - 300 - 323 mm
Height	500 - 600 - 700 - 900 - 1000 mm
Wall Thickness	4 - 8 - 10 - 14 - 20 - 26 - 30 - 40 mm
Operation Type	Fixed. Concretion to Foundation
Connection Points	M10 x 100 Lag Screw
Fixed Section	Electrostatic Powder Paint / 304 - 316 Stainless Steel

Technical Drawing

	A (mm)	273
	B (mm)	692
	C (mm)	300
	D (mm)	Ø 460



*Arma Kontrol has right to change information and technical drawing anytime without notice.



With spectacular design, elegant LED lighting and innumerable outstanding features;

FAVORITE OF THE CITY



STOCKHOLM



TOKYO



BERLIN



ISTANBUL



DUBAI

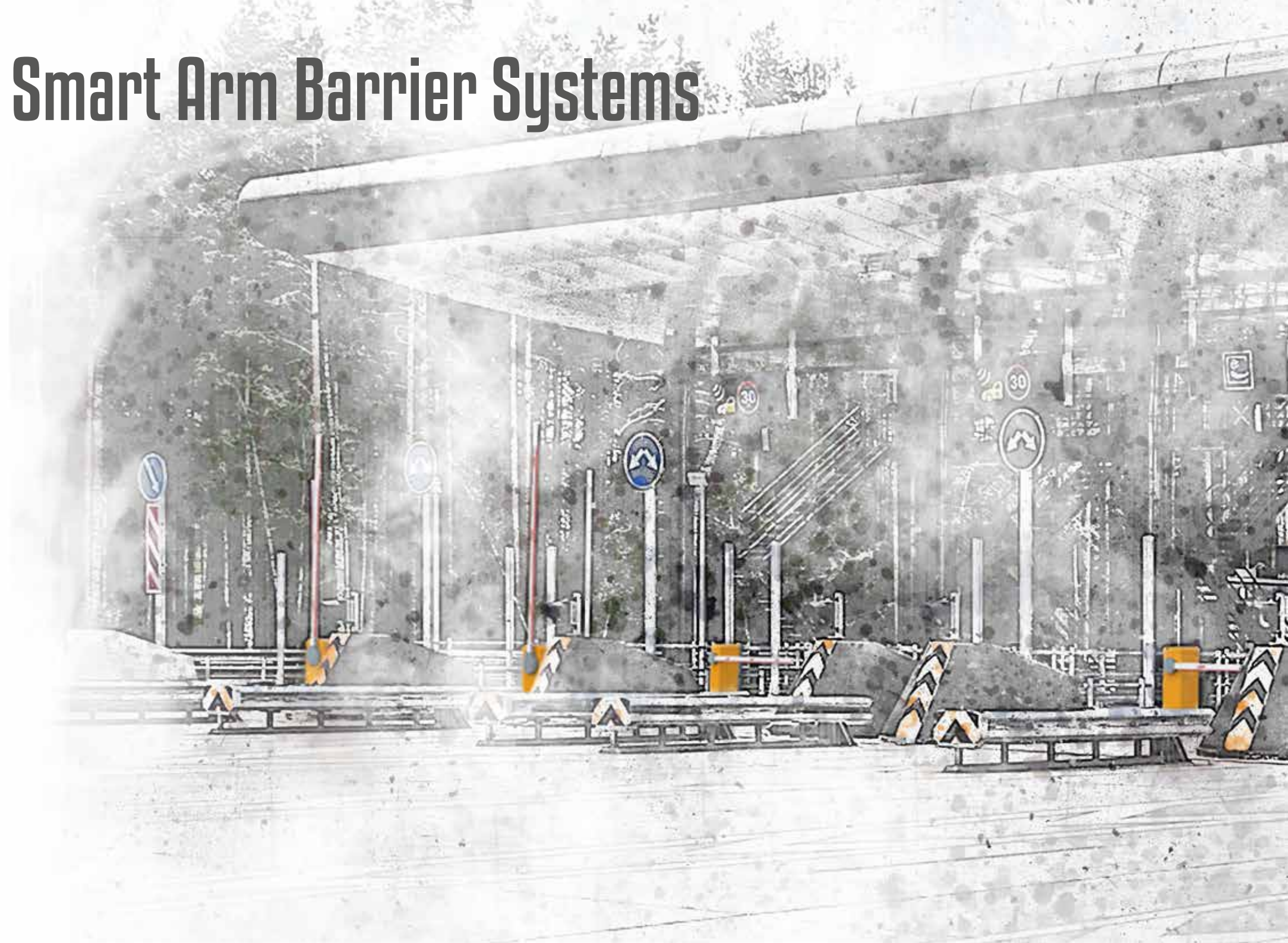


PARIS

arma city serie



Smart Arm Barrier Systems





Arma-212 Arm Barrier

(Max. 5m)

Arma 212 Arm Barriers have an aesthetic appearance, a weather-proof outdoor cabin, a powerful engine, and are produced to international quality standards. Photocells on the barrier detect vehicles passing through, preventing the barrier lever from closing and any possible accidents that might arise. If desired, the barrier can be controlled with alternative accessories such as remote controls, manual buttons, card readers, license plate recognition, RFID, other mobile controls, and different lever lengths can be used depending on vehicle width.



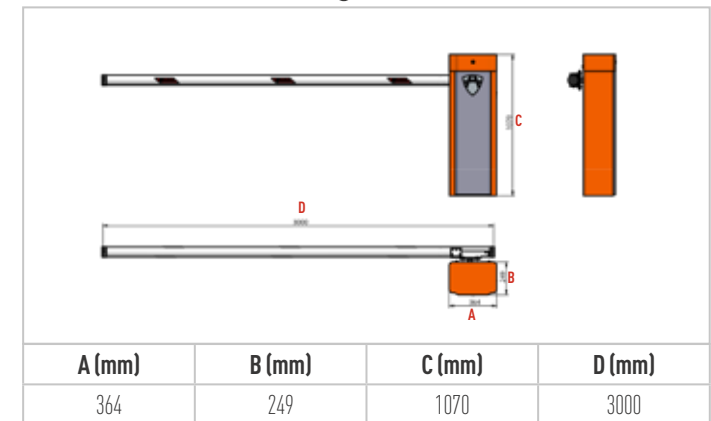
Technical Features

Operation Time	3,5 seconds
Operation Voltage	1ph 220V (± 10) (AC) 50/60 Hz.
Max. Arm Length	5000 mm
Daily Max. Operation Cycle	8000 Cycle
Noise Level	≤62 dB
Barrier Weight	65 kg
Options	Photocell, Flasher, Traffic Light, Loop Detector
Operation Temperature	-20 °C / +50 °C
Compatibility with Access Control Systems	Compatible to integrate any access control system with dry contact

Application



Technical Drawing



*Arma Kontrol has right to change information and technical drawing anytime without notice.



Arma-214 Pro Arm Barrier

(Max. 4m)

Arma 214 Pro Arm Barrier have an aesthetic appearance, a weather-proof outdoor cabin, a powerful engine, and are produced to international quality standards. They are designed to control the entrances and exits of places such as apartment buildings and complexes that require a medium level of security. Photocells on the barrier detect vehicles passing through, preventing the barrier lever from closing and any possible accidents that might arise. If desired, the barrier can be controlled with alternative accessories such as remote controls, manual buttons, card readers, LPR System, RFID, mobile controls, and different lever lengths can be used depending on vehicle width.



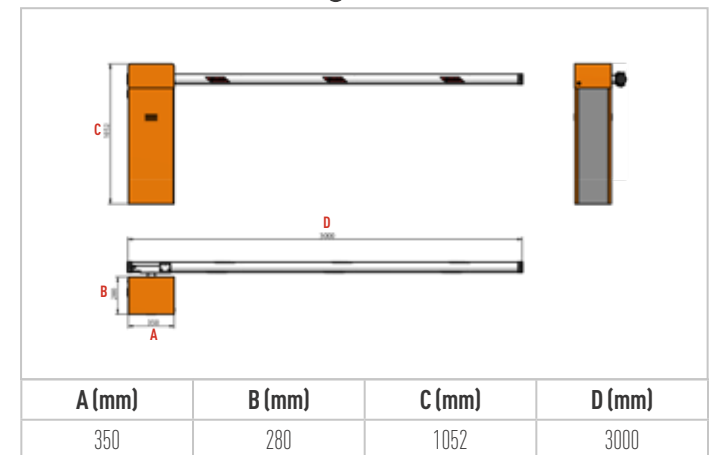
Technical Features

Operation Time	1,8 seconds
Operation Voltage	220 V (±) (AC) 50/60 Hz.
Max. Arm Length	4 Meters
Daily Max. Operation Cycle	3000 Cycle
Noise Level	≤62 dB
Barrier Weight	50 kg
Options	Photocell, Flasher, Traffic Light, ect.
Operation Temperature	-20 °C / +50 °C
Protection Level	IP55
Compatibility with Access Control Systems	Compatible to integrate any access control system with dry contact

Application



Technical Drawing



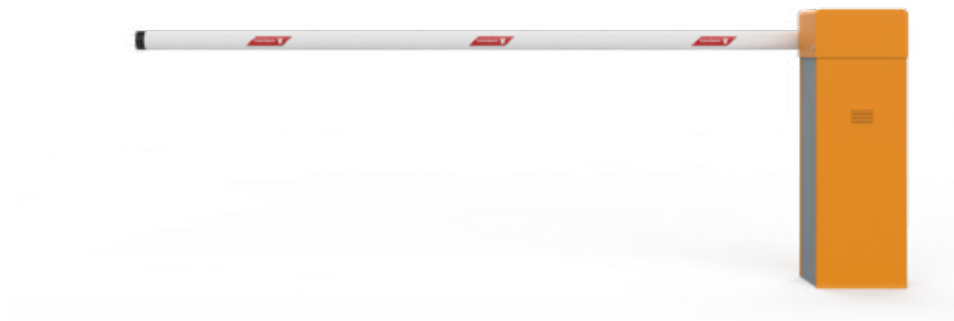
*Arma Kontrol has right to change information and technical drawing anytime without notice.



216 Pro Arm Barrier

(Max. 6m)

Arma 216 Pro Arm Barrier have an aesthetic appearance, a weather-proof outdoor cabin, a powerful engine, and are produced to international quality standards. Photocells on the barrier detect vehicles passing through, preventing the barrier lever from closing and any possible accidents that might arise. If desired, the barrier can be controlled with alternative accessories such as remote controls, manual buttons, card readers, license plate recognition, RFID, other mobile controls, and different lever lengths can be used depending on vehicle width.



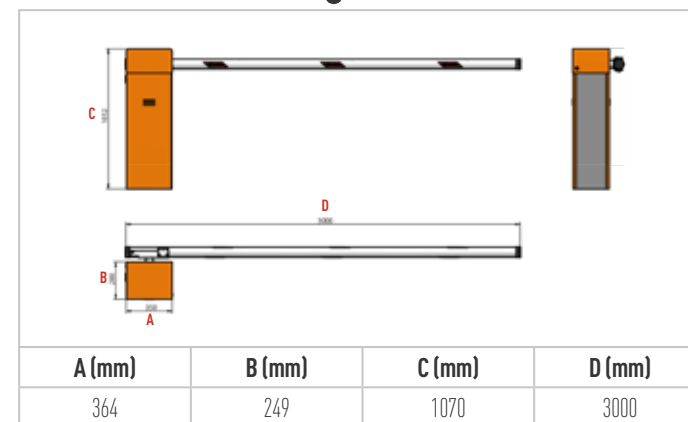
Technical Features

Operation Time	5,5 seconds
Operation Voltage	220 V (±) (AC) 50/60 Hz.
Max. Arm Length	6 Meters
Noise Level	≤62 dB
Barrier Weight	75 kg
Options	Photocell, Flasher, Traffic Light, ect.
Operation Temperature	-20 °C / +50 °C
Protection Level	IP55
Compatibility with Access Control Systems	Compatible to integrate any access control system with dry contact

Application



Technical Drawing



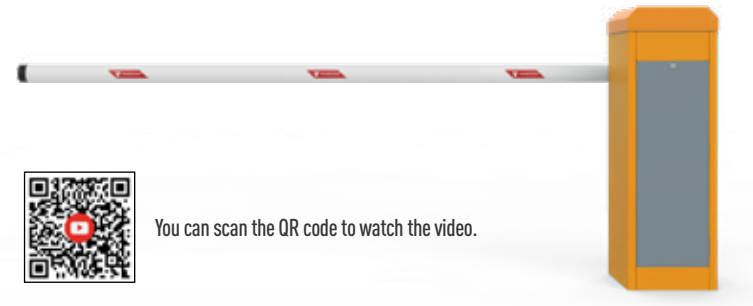
*Arma Kontrol has right to change information and technical drawing anytime without notice.



Arma Pro-BanN Arm Barrier

(1,2 - 5 sec. - Max 6m)

Arma Pro-BanN Arm Barrier have an aesthetic appearance, a weather-proof external cabin, a strong engine, and are produced to international quality standards. These barriers are 100% domestic products, and their operating speed can be adjusted from 0.7 to 4.0 s as the user needs. In addition, the lever can operate faster when opening and slower when closing if desired. It features a 90° pop-up lever to avoid damage to the barrier motor in case of vehicle impact. In addition to this feature, the lever goes up from a 90° angle and then closes to secure the area so that the system operates continuously. The barrier's wind resistance is 30% better than similar barrier systems. Prices of Arma Pro-BanN Arm Barrier vary for different models and options and for different areas of use. They can be integrated with all access control systems such as GSM, License Plate Recognition Systems, RFID Systems, Card Readers, etc.



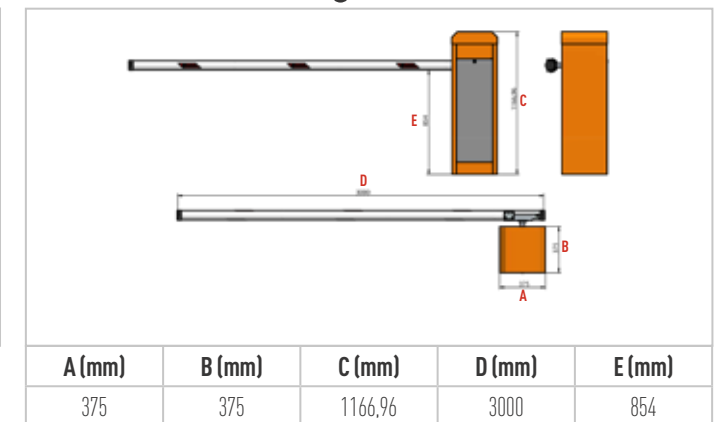
Technical Features

Operation Time	1,2 - 5 seconds (Adjustable)
Smart Arm Feature	3000 - 3500 mm
Power	1ph 220V (±10) (AC) 50/60 Hz
Daily Max. Operation Cycle	10000 Cycle
Barrier Weight	65 Kg
Options	Photocell, Flasher, Traffic Light, Loop Detector
Wind Resistance	30±5Km/h
Operation Temperature	-20°C / +50°C
Compatibility with Access Control Systems	System operated with Arma Board. Compatible to work with any access control system.

Application



Technical Drawing



*Arma Kontrol has right to change information and technical drawing anytime without notice.



Arma Broken Arm Barrier 90°

Arma Broken Arm Barrier have an aesthetic appearance, a weather-proof outdoor cabin, a powerful engine, and are produced to international quality standards. Photocells on the barrier detect vehicles passing through, preventing the barrier lever from closing and any possible accidents that might arise. If desired, the barrier can be controlled with alternative accessories such as remote controls, manual buttons, card readers, license plate recognition, RFID, other mobile controls, and different lever lengths can be used depending on vehicle width.



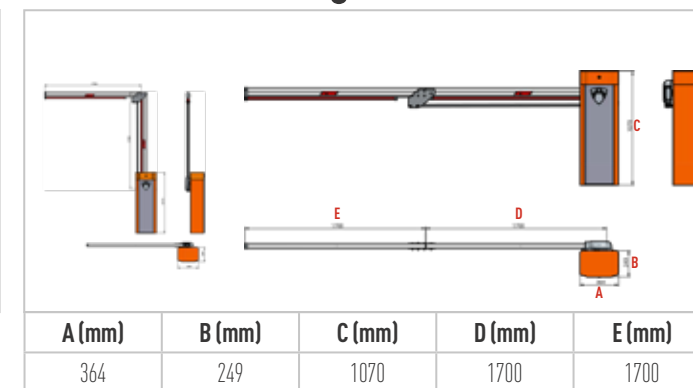
Technical Features

Operation Time	5,5 seconds
Operation Voltage	1ph 220V (±10) (AC) 50/60 Hz.
Max. Arm Length	4500 mm
Daily Max. Operation Cycle	1200 cycles
Barrier Weight	65 kg
Options	Photocell, Flasher, Traffic Light, Loop Detector
Operation Temperature	-20 °C / +50 °C
Compatibility with Access Control Systems	Compatible to integrate any access control system with dry contact

Application



Technical Drawing



*Arma Kontrol has right to change information and technical drawing anytime without notice.



Arma Broken Arm Barrier 180°

Arma Broken Arm Barrier have an aesthetic appearance, a weather-proof outdoor cabin, a powerful engine, and are produced to international quality standards. Photocells on the barrier detect vehicles passing through, preventing the barrier lever from closing and any possible accidents that might arise. If desired, the barrier can be controlled with alternative accessories such as remote controls, manual buttons, card readers, license plate recognition, HGS-OGS, other mobile controls, and different lever lengths can be used depending on vehicle width.



Technical Features

Operation Time	5,5 seconds
Operation Voltage	1ph 220V (±10) (AC) 50/60 Hz.
Max. Arm Length	4000 mm
Daily Max. Operation Cycle	1200 cycles
Barrier Weight	65 kg
Options	Photocell, Flasher, Traffic Light, Loop Detector
Operation Temperature	-20 °C / +50 °C
Compatibility with Access Control Systems	Compatible to integrate any access control system with dry contact

Application



Technical Drawing



*Arma Kontrol has right to change information and technical drawing anytime without notice.



Arma Half Fence Arm Barrier

Arma Half Fence Barrier have an aesthetic appearance, a weather-proof outdoor cabin, a powerful engine, and are produced to international quality standards. Photocells on the barrier detect vehicles passing through, preventing the barrier lever from closing and any possible accidents that might arise. If desired, the barrier can be controlled with alternative accessories such as remote controls, manual buttons, card readers, license plate recognition, RFID, other mobile controls, and different lever lengths can be used depending on entrance width.



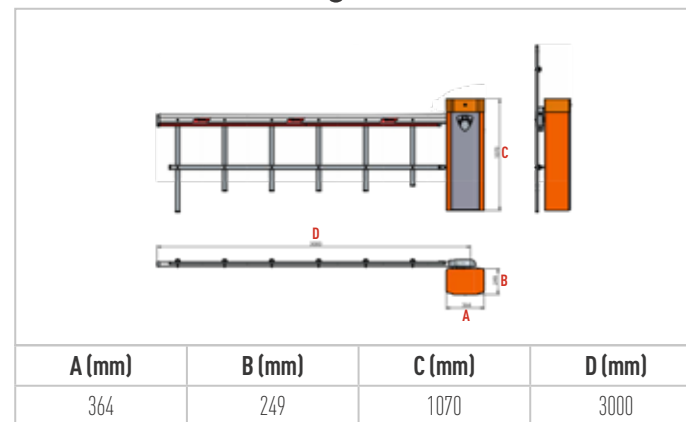
Technical Features

Operation Time	5,5 seconds
Operation Voltage	1ph 220V (±10) (AC) 50/60 Hz.
Max. Arm Length	4500 mm
Daily Max. Operation Cycle	1200 cycles
Noise Level	≤62 dB
Barrier Weight	65 kg
Options	Photocell, Flasher, Traffic Light, Loop Detector
Operation Temperature	-20 °C / +50 °C
Compatibility with Access Control Systems	Compatible to integrate any access control system with dry contact

Application



Technical Drawing

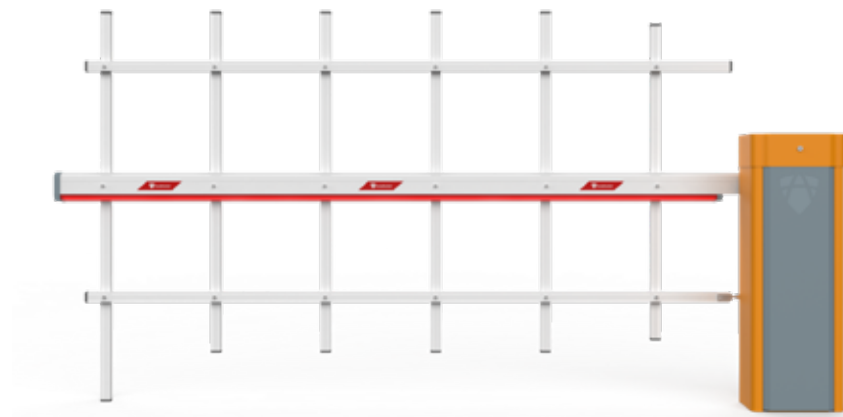


*Arma Kontrol has right to change information and technical drawing anytime without notice.



Arma Full Fence Arm Barrier

Arma Full Fence Barrier have an aesthetic appearance, a weather-proof outdoor cabin, a powerful engine, and are produced to international quality standards. Photocells on the barrier detect vehicles passing through, preventing the barrier lever from closing and any possible accidents that might arise. If desired, the barrier can be controlled with alternative accessories such as remote controls, manual buttons, card readers, license plate recognition, RFID, other mobile controls, and different lever lengths can be used depending on entrance



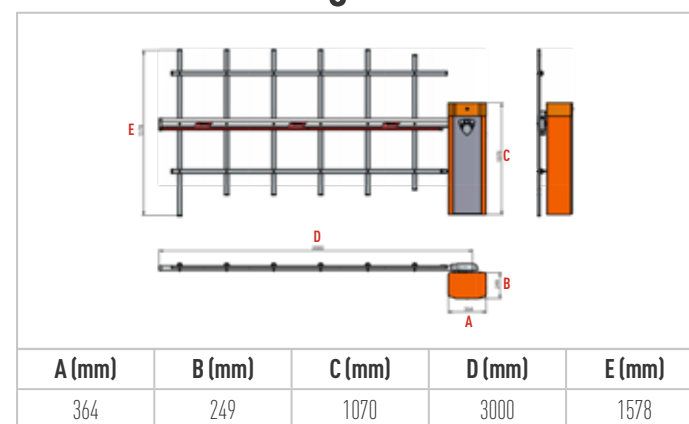
Technical Features

Operation Time	5,5 seconds
Operation Voltage	1ph 220V (±10) (AC) 50/60 Hz.
Max. Arm Length	4000 mm
Daily Max. Operation Cycle	1200 cycles
Noise Level	≤62 dB
Barrier Weight	65 kg
Options	Photocell, Flasher, Traffic Light, Loop Detector
Operation Temperature	-20 °C / +50 °C
Compatibility with Access Control Systems	Compatible to integrate any access control system with dry contact

Application

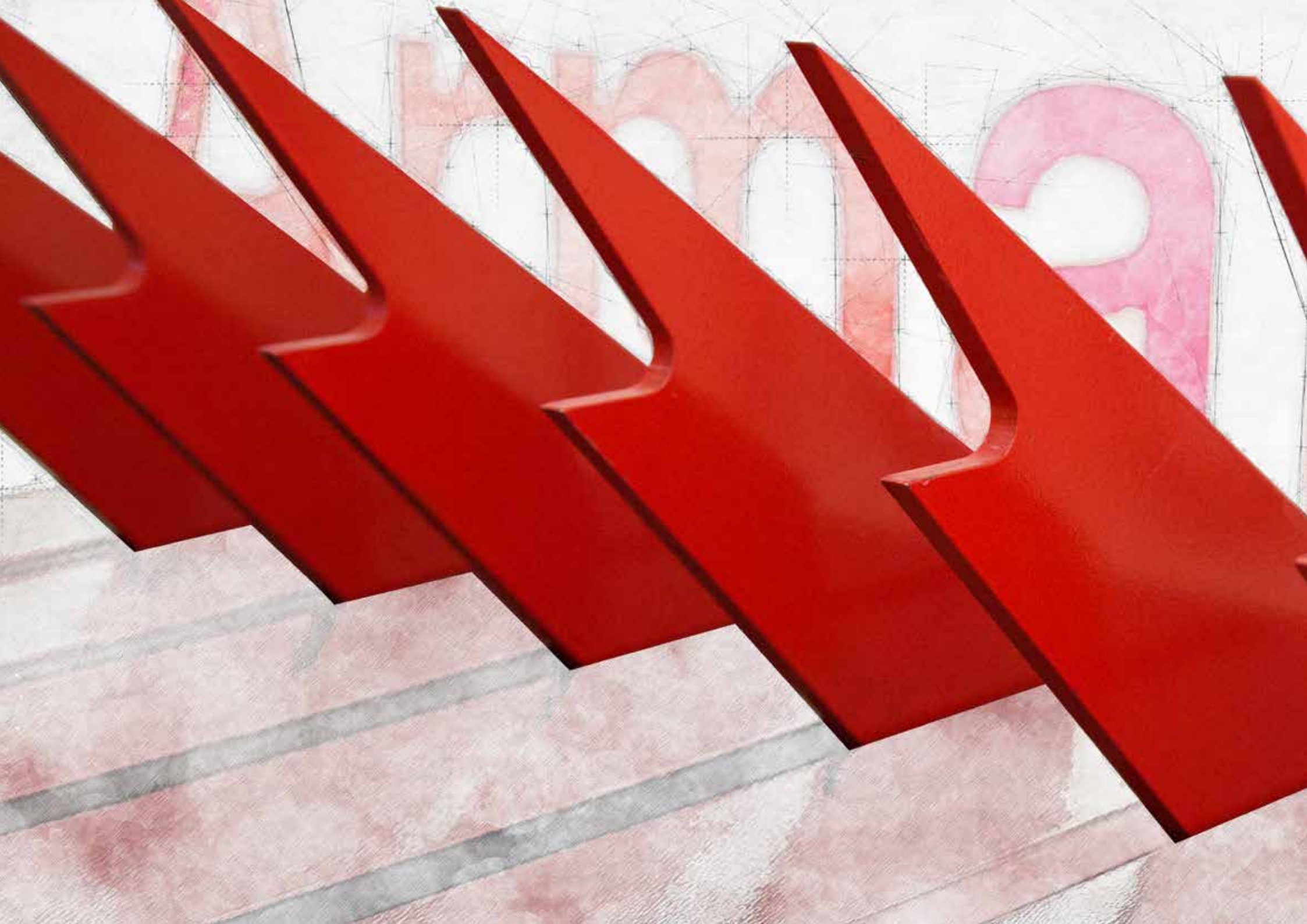


Technical Drawing



*Arma Kontrol has right to change information and technical drawing anytime without notice.





Tire Killers



Hydraulic Tire Killer

Arma Kontrol Hydraulic Tire Killers are used to prevent entry from unauthorized access points in parking lots, shopping malls, apartment complexes, one-way roads, etc. It can be deactivated if desired. Hydraulic Tire Killers prevent entry by unauthorized vehicles by causing tire damage through its independent spikes should such an attempt be made. The spikes are 9 cm but can be produced in special sizes to customer demands. Special rubber baffles reduce the sound intensity resulting from impact on these spikes.



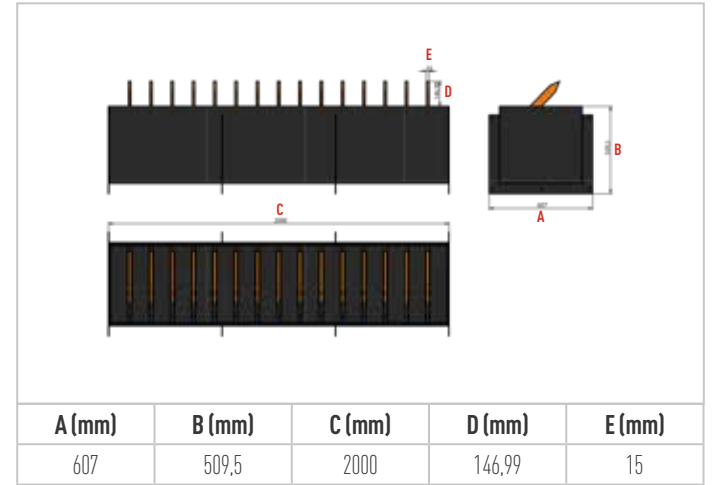
Technical Features

Blade Height	90 - 140 - 370 mm
Blade Thickness	10 - 15 - 20 mm
Trap Length	1000 mm - 2000 mm - 3000 mm - 4000 mm - 5000 mm
Paint	Polyurethan based wet paint which is resistant to UV and Corrosion.
Operation Type	Hydraulic Driven
Operation Voltage	3ph AC 380V (± 10) 50/60 Hz.
Working Temperature	-25 °C / +50 °C
Warning Support	Caution Light
Access Kontrol Sistemleri ile uyumluluk	System operated with Arma Board. Compatible to work with any access control system.

Application



Technical Drawing



*Arma Kontrol has right to change information and technical drawing anytime without notice.



Double Sided Automatic Tire Killer

Like other barrier systems, the Arma Kontrol Double Sided Tire Killer is used to control entry/exits. Rather than operate manually as standard ground traps do, it works by remote control, button systems, etc. This system does not require infrastructure changes (excavation, earthwork, concreting) and can be installed directly on the ground using steel dowels. The spikes are 80mm-long but can be produced in special sizes to customer demands. For our Automatic Trap Systems, we use epoxy paint or electrostatic powder paint resistant to external factors. The system can work with a manual lever apparatus to get 100% efficiency from the system in case of power cuts. Double Sided Tire Killer prices vary depending on the width of the area and the desired spike length. They can operate on solar energy and be integrated with all kinds of Access Control Systems GSM, LPR, RFID/Electronic Toll Collection-Fast Pass Systems, Card Readers, etc.



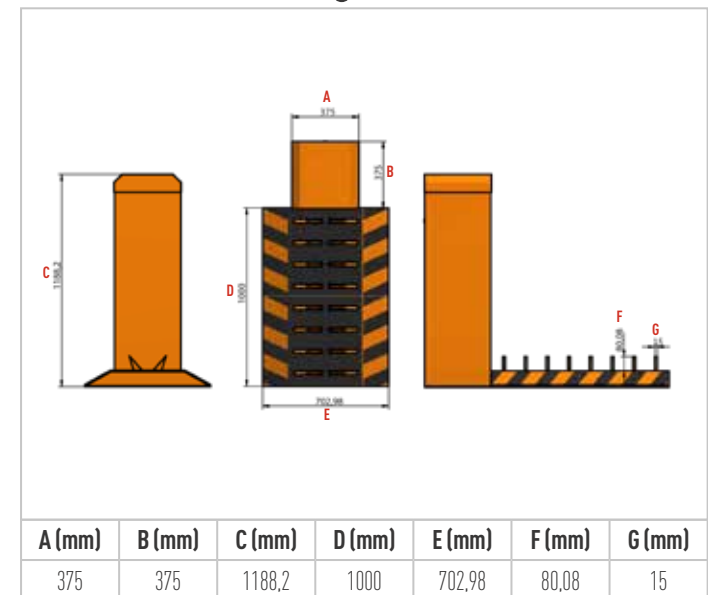
Technical Features

Trap Length	1000 mm - 2000 mm - 3000 mm - 4000 mm
Blade Height	80 mm
Case Length	700 mm
Blade Wall Thickness	15 mm
Blade Model	Double Sided
Movable Part Material	ST 44
Operation Type	Electromechanic
Open-Close Time	1 sc
Operation Temperature	-25°C / +50°C
Power	1ph AC 220V (±10)V 50/60 Hz.
System Safety Support	Photocell, Loop Detector
Outer Metal Sheet	Polyurethan based wet paint which is resistant to UV and Corrosion.
Compatibility with Access Control Systems	System operated with Arma Board. Compatible to work with any access control system.

Application



Technical Drawing



*Arma Kontrol has right to change information and technical drawing anytime without notice.



Soundless Double Blade Tire Killer

Arma Kontrol Soundless Double Blade Tire Killers are used to prevent entry from unauthorized access points in parking lots, shopping malls, apartment complexes, one-way roads etc. These Tire Killers prevent entry by unauthorized vehicles by causing tire damage through their independent spikes should such an attempt be made. The spikes are 7 cm but can be produced in special sizes to customer demands. Special rubber baffles reduce the sound intensity resulting from impact on these spikes.



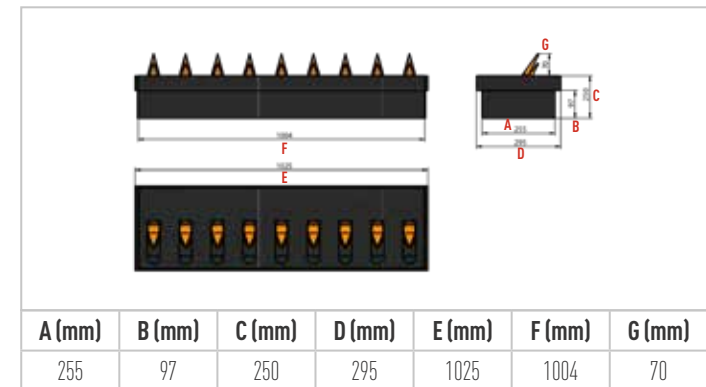
Technical Features

Tap Length	1000 mm - 2000 mm
Blade Height	70 mm
Blade Type	Molded Blade
Blade Thickness	10 mm
Blade Operation	Independent Operation
Trap Case	300x1000x150 mm
Paint	Polyurethan based wet paint which is resistant to UV and Corrosion.
Weight	70 kg/m (per meter)

Application



Technical Drawing



*Arma Kontrol has right to change information and technical drawing anytime without notice.



Single Blade Tire Killer

Arma Kontrol Single Blade Tire Killer used to prevent entry from unauthorized access points in parking lots, shopping malls, apartment complexes, one-way roads etc. while allowing safe, easy, and speedy access from authorized entrances. Single Blade Tire Killers prevent entry by unauthorized vehicles by causing tire damage through its independent spikes should such an attempt be made. The spikes are 7 cm but can be produced in special sizes to customer demands. Special rubber baffles reduce the sound intensity resulting from impact on these spikes.



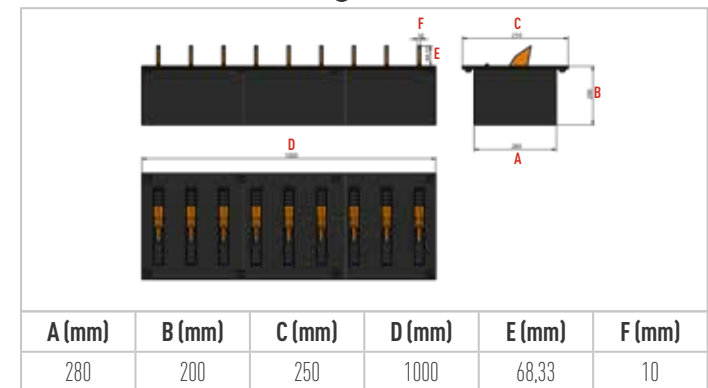
Technical Features

Trap Length	1000 mm - 2000 mm
Blade Height	70 - 90 - 120 mm
Blade Type	Steel Sheet Blade
Blade Thickness	10 mm
Blade Operation	Independent Operation
Trap Case Dimensions	360x1000x200 mm
Paint	Polyurethan based wet paint which is resistant to UV and Corrosion.
Weight	60 kg/m

Application



Technical Drawing



*Arma Kontrol has right to change information and technical drawing anytime without notice.



Manual Single Blade Tire Killer

Arma Kontrol Manual Single Blade Tire Killers with Manual Lever are used to prevent entry from wrong access points in parking lots, shopping malls, apartment complexes, one-way roads etc. It can be deactivated if desired. Tire Killers with Manual Lever prevent entry by unauthorized vehicles by causing tire damage through its independent blades should such an attempt be made. The spikes are 7 cm but can be produced in special sizes to customer demands. Special rubber baffles reduce the sound intensity resulting from impact on these blades. The manual lever allows additional option to lower the spikes manually if there is any need for that.



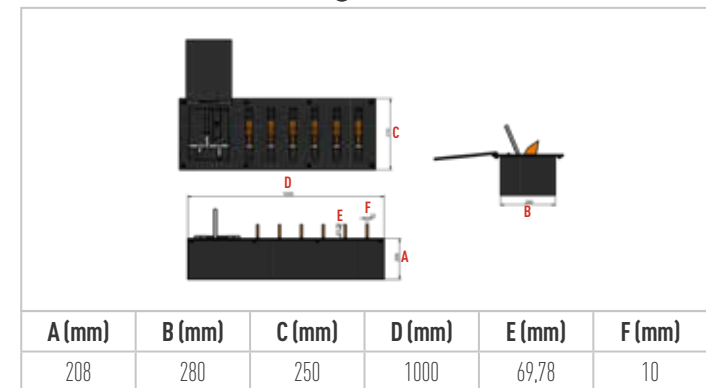
Technical Features

Trap Length	1000 mm - 2000 mm - 3000 mm
Blade Height	70 - 90 mm
Blade Type	Steel Sheet Blade
Blade Operation	Independent Operation
Blade Thickness	10 mm
Trap Case Dimensions	1330x380x225 mm
Paint	Polyurethan based wet paint which is resistant to UV and Corrosion.
Weight	75 kg/m

Application



Technical Drawing



*Arma Kontrol has right to change information and technical drawing anytime without notice.



Surface Mounted Tire Killer

Arma Kontrol Surface Mounted Tire Killer for Uneven Roads are specially designed to prevent vehicles from entering from the wrong direction on one-way roads, using easy to assemble, steel speed bumps and spikes. Today, Tire Killers, also known as vehicle traps, are used to prevent unauthorized vehicle entry in certain areas such as garages, public buildings, private buildings, parking lots and apartment complexes. These traps can be produced with different shapes and spikes depending on the intended use, but they all make vehicle passage impossible except in the direction allowed by the blocker.



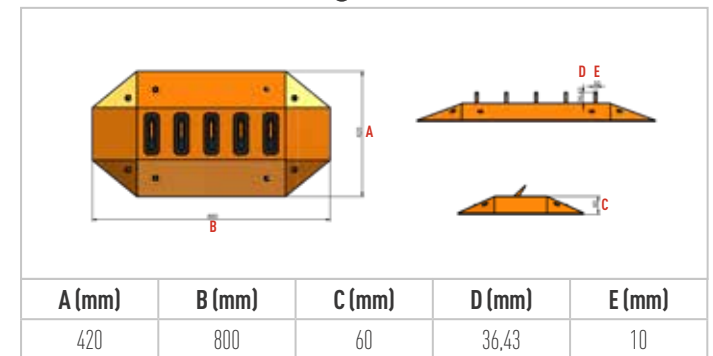
Technical Features

Trap Length	500 mm
Trap Width	420 mm
Top Plate	4 - 5 mm Checkered Plate
Blade Height	40 mm
Blade Operation Type	Synchronized Blade Operation
Blade Thickness	10 mm
Paint	Powder Coated Paint

Application



Technical Drawing



*Arma Kontrol has right to change information and technical drawing anytime without notice.



Reverse Direction Tire Killers

Arma Kontrol Reverse Direction Tire Killers are traffic flow barriers that are used by public institutions and organizations, military facilities, law enforcement offices, shopping malls, sites, etc. to prevent the access of unauthorized vehicles. As opposed to other Tire Killers, this system is designed as a complete deterrent system that does not blow the vehicle tires if they try to enter from the wrong direction. The spikes are 80mm high but can be produced in special sizes to customer demands. The design, R&D and production of this patented system are all products of Arma Kontrol engineers.



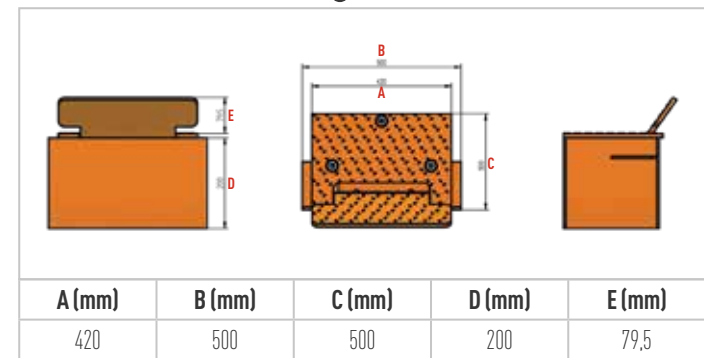
Technical Features

Trap Length	500 mm
Trap Width	420 mm
Trap Height	800 mm
Top Plate	4 - 5 mm Checkered Plate
Drive Movement	Mechanical Driven
Trap Type	Independent
Paint	Polyurethane based wet paint with high UV and corrosion resistance in accordance with ISO 12944

Application



Technical Drawing



*Arma Kontrol has right to change information and technical drawing anytime without notice.



Custom Design Barriers

Arma Kontrol, who is 100% domestic manufacturer on Access Control Industry is capable of providing concept products with innovative designs besides high security barrier systems. In this concept product range, there are special products suitable for architects, project providers, engineers which the architecture and designs they want inside or outside of the building. Arma Kontrol provides special solutions and offers consulting service to projects with its engineers and preeminent architectures of our industry about concept products.



Technical Features

Diameter	Customized Production
Height	Customized Production
Wall Thickness	Customized Production
Movable Part	Customized Production
Inner Sleeve	Hot Dip Galvanized
Open - Close Time	Customized Production
Control Panel	Arma Board. Compatible to work with any access control system
System Safety Support	Loop Detector

Application



*Arma Kontrol has right to change information and technical drawing anytime without notice.





Arma Armored Security Cabin

Arma Armored Security Cabin Against Infantry Service Rifles

It is specially designed to provide safety of armed security personnel in case of any close encounter in high security places such as border areas, government buildings, military bases.

1. Bulletproof Security Cabin Dimensions

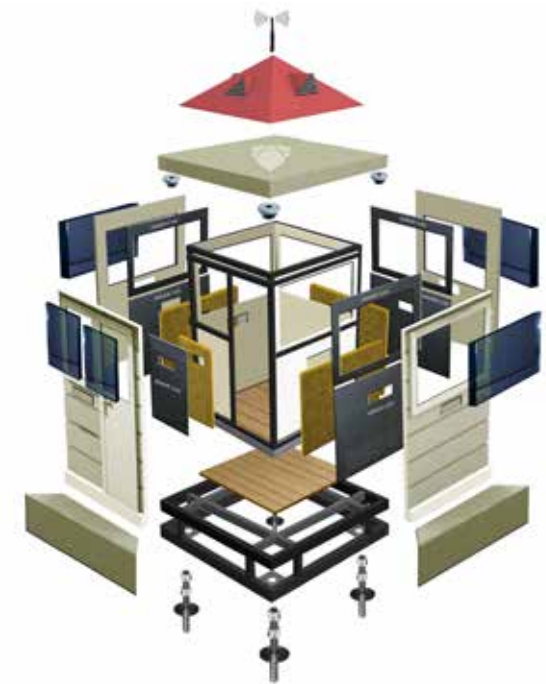
- Outer Cabin Dimensions max. 1700x1700mm.
- Internal Cabin Dimensions max. 1500 x 1500 mm.
- Outer Cabin Height max. 2500 mm
- Internal Cabin Height max. 2200 mm
- Height from Foundation max. 300 mm (optional)
- Fixed Window Dimensions max. 800 x 600 mm
- Door Dimensions max. 1900 x 750 mm
- Firing Port Dimensions 150 x 250 mm

2. Bulletproof Window Features (Compatible with TS EN 1063 Standards))

- Compatible with European BR7 Standards.
- Cabin has resistance to bullets which fired 10 meters away and 600 meters / hour 7,62 x 51 mm type bullet.
- Laminated Materials: (PU) Polyurethane & (PVB) Polyvinyl Butyral.
- Laminated Window Width: 82 mm wide (BR7) (+ - 1 mm)

3. Bulletproof Armor Features

- Compatible with European BR7 Standards.
- Cabin has resistance to bullets which fired 10 meters away and 600 meters / hour 7,62 x 51 mm type bullet.
- Armor Width 15 mm.
- Armor connections is being prepared with steel bolts and welding
- Whole cabin is covered with bulletproof armor. There is no non-armored surface foundation). Foundation is not covered with armor.



EN 1063	BR2	BR3	BR4	BR5	BR6		BR7	
STANAG 4569					I	II		III
NIJ	IIA	III+	IIIA		III		IV	
WEAPON	9mm	357 Magnum	44 Magnum	5.56 x 45 SS109 7.62 x 39 MSC	7.62 x 51 FJ/ FB/SC	7.62 x 39 API	7.62 x 51 AP FJ/ FC/HCI	7.62 x 51 AP 7.62 x 54 R
	 	 	 	 	 	 	 	 

*Arma Kontrol has right to change information and technical drawing anytime without notice.





ArmaKontrol
Group Company
— 2006 —





13
COMING SOON



14
COMING SOON



15
COMING SOON

Our Some References



Azerbaijan



Bahrain



United Arab Emirates



Algeria



France



Georgia



Croatia



Sweden



Italy



Turkish Republic of
Northern Cyprus



Congo



Kosovo



Lebanon



Macedonia



Qatar



Romania



Russia



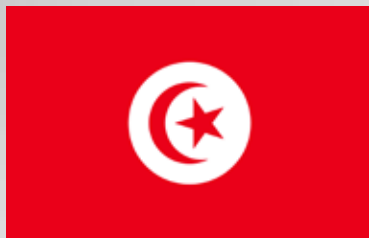
Serbia



Sudan



Saudi Arabia



Tunisia



Turkmenistan



Ukraine



Jordan Jordan



"Please check our website for application photos and other references."



ArmaKontrol
Group Company
— 2006 —

Factory

Beylikduzu OSB.
Mermerciler San. Sitesi 2.
Cadde No:11 Yakuplu/
Beylikduzu - Istanbul/Türkiye
Phone: +90 212 222 75 00
arma@armakontrol.com

**Anatolian Side
Technical Service Office**

Mimar Sinan Mah. Uskudar Cad.
No:1 Yedpa Ticaret Merkezi G Cad.
No: 102 Atasehir/ Istanbul/Türkiye
Phone: +90 212 549 26 48
arma@armakontrol.com

**Ankara Sales and
Technical Service Office**

Bademlidere Mah. Semsettin
Gunaltay Cad. 148/A
Cankaya/Ankara/Türkiye
Phone: +90 312 219 19 28
ankara@armakontrol.com

Batman Office

Belde Mah. T.P.A.O
Bulvari No:258/B
Batman/Türkiye
Phone: +90 488 214 56 87
batman@armakontrol.com.tr

Iraq Baghdad Office

Alnahdha-Aldhilal Str. Near The
Housing Authority Mohammed
Abdulahuseein Alrubaii
Phone: +964 770 166 6601
irak@armakontrol.com

Arma WOC Software Office

Levent Loft Residence
Esentepe Mah. Buyukdere Cad. A
Blok No: 201 Ic Kapi No: 147 Sisli/
Istanbul/Türkiye
Phone: +90 212 954 00 62
arma@armakontrol.com

Samsun Technocity Office

OMU Atakum Yerleskesi Atakum/
Samsun Teknoloji Gelistirme Bolgesi
165/62 Samsun / Türkiye
Phone: +90 212 954 00 62
arma@armakontrol.com